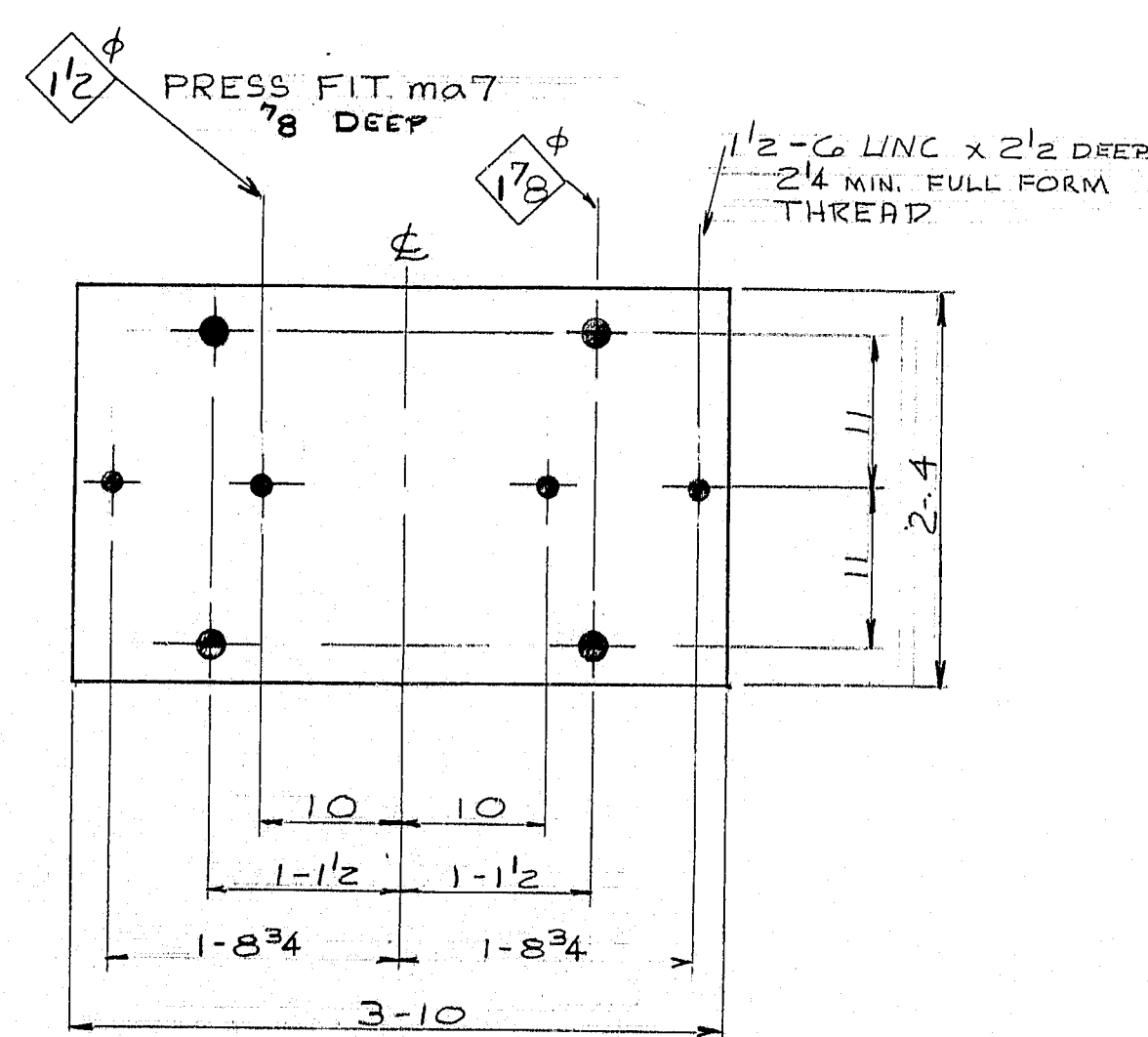
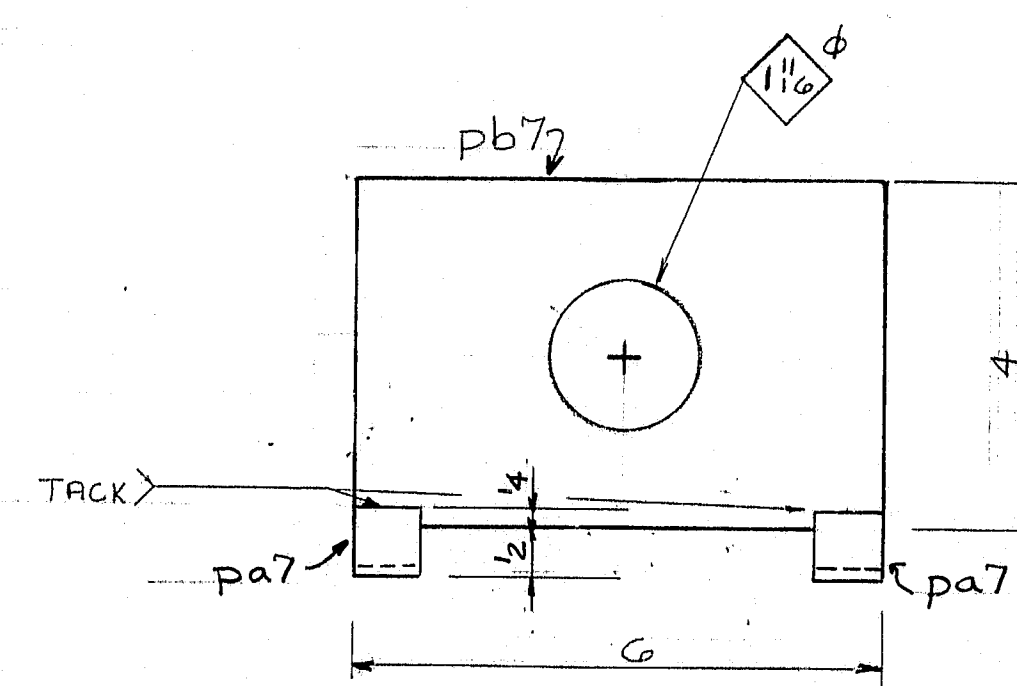


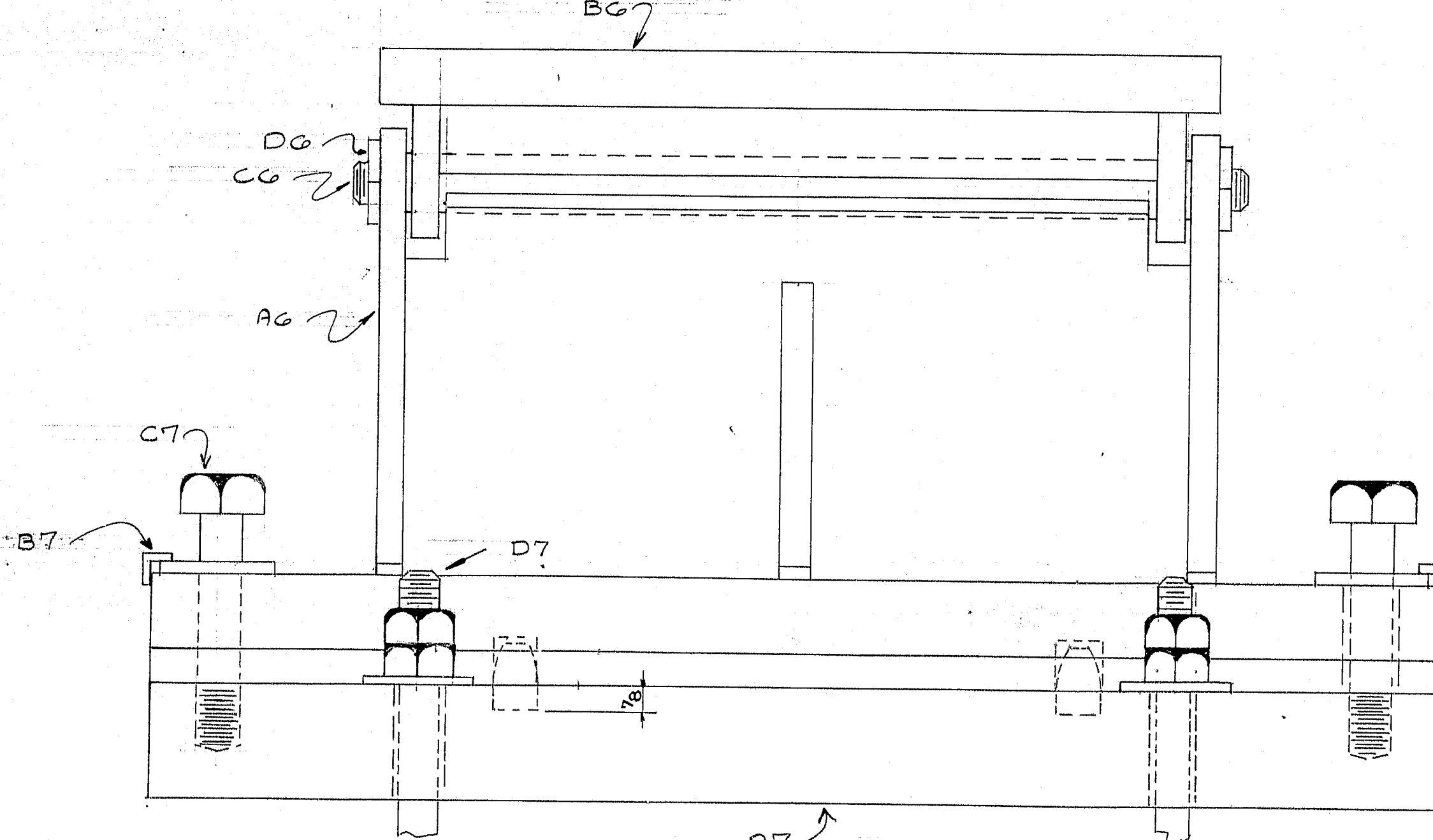
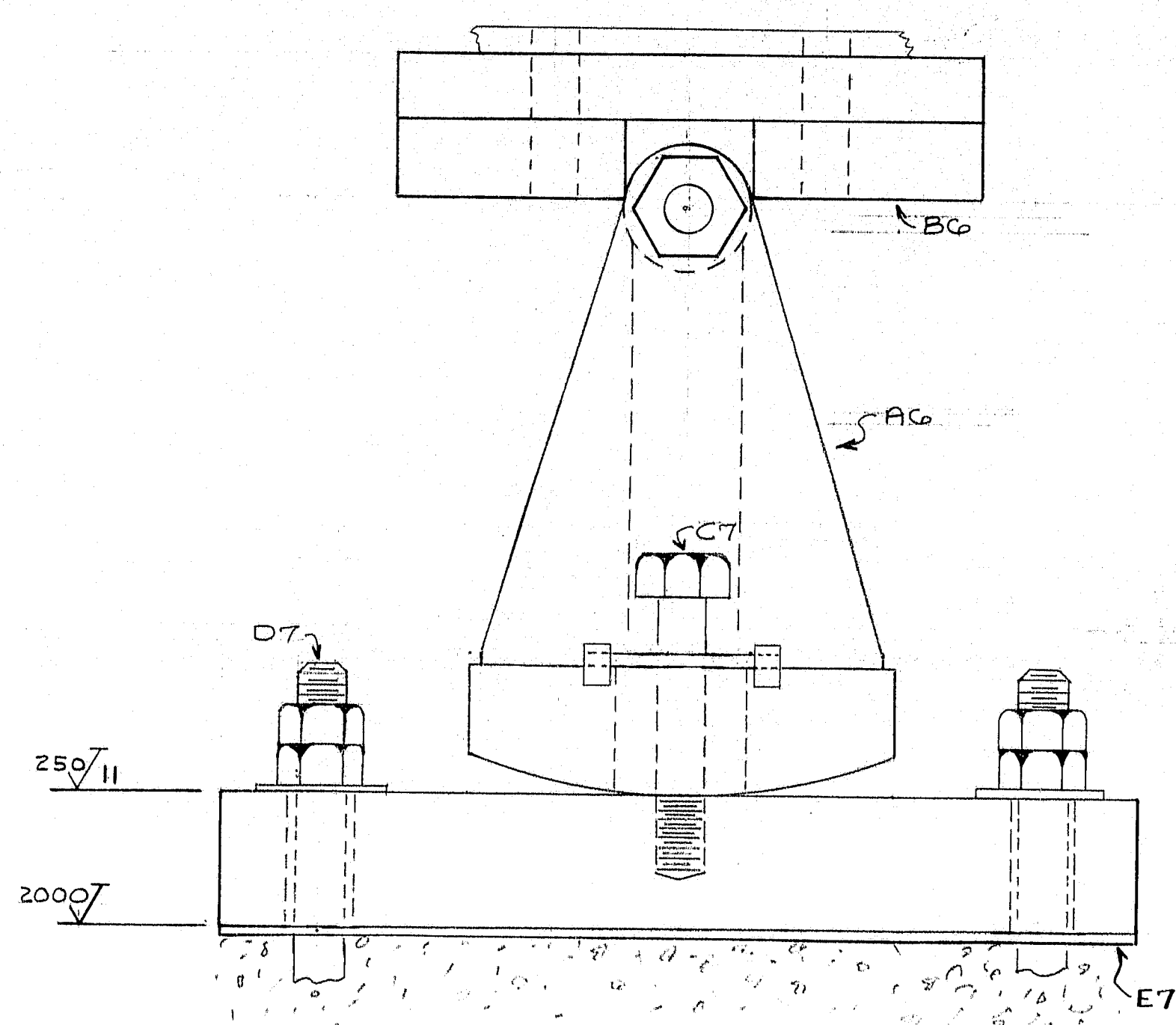
DETAIL OF ma7



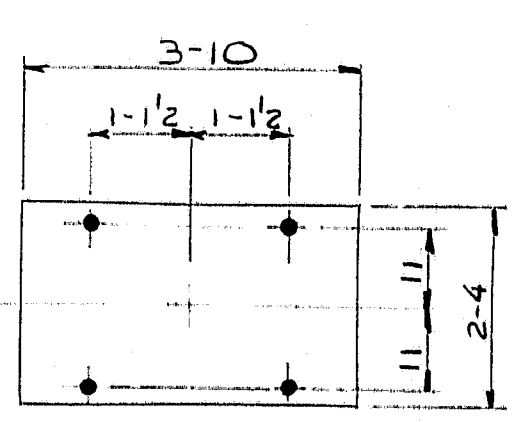
4-A7



8-B7



4-A6



4-E7

Br.#'s  
1458 & 5817

- PAINT NOTES:
1. MASONRY PLATE, A7, TO RELIEVE 2 COATS OF PAINT.
  2. PLATE WASHERS & CAP SCREWS, C7 TO RELIEVE 1 COAT
  3. ANCHOR BOLT: NO PAINT
  4. WORK WITH PAINT NOTICE ON DWG G

R89-10

REV A REMOVED D7 per John Giffen They will reuse existing A.B.

MATERIAL SCHEDULE

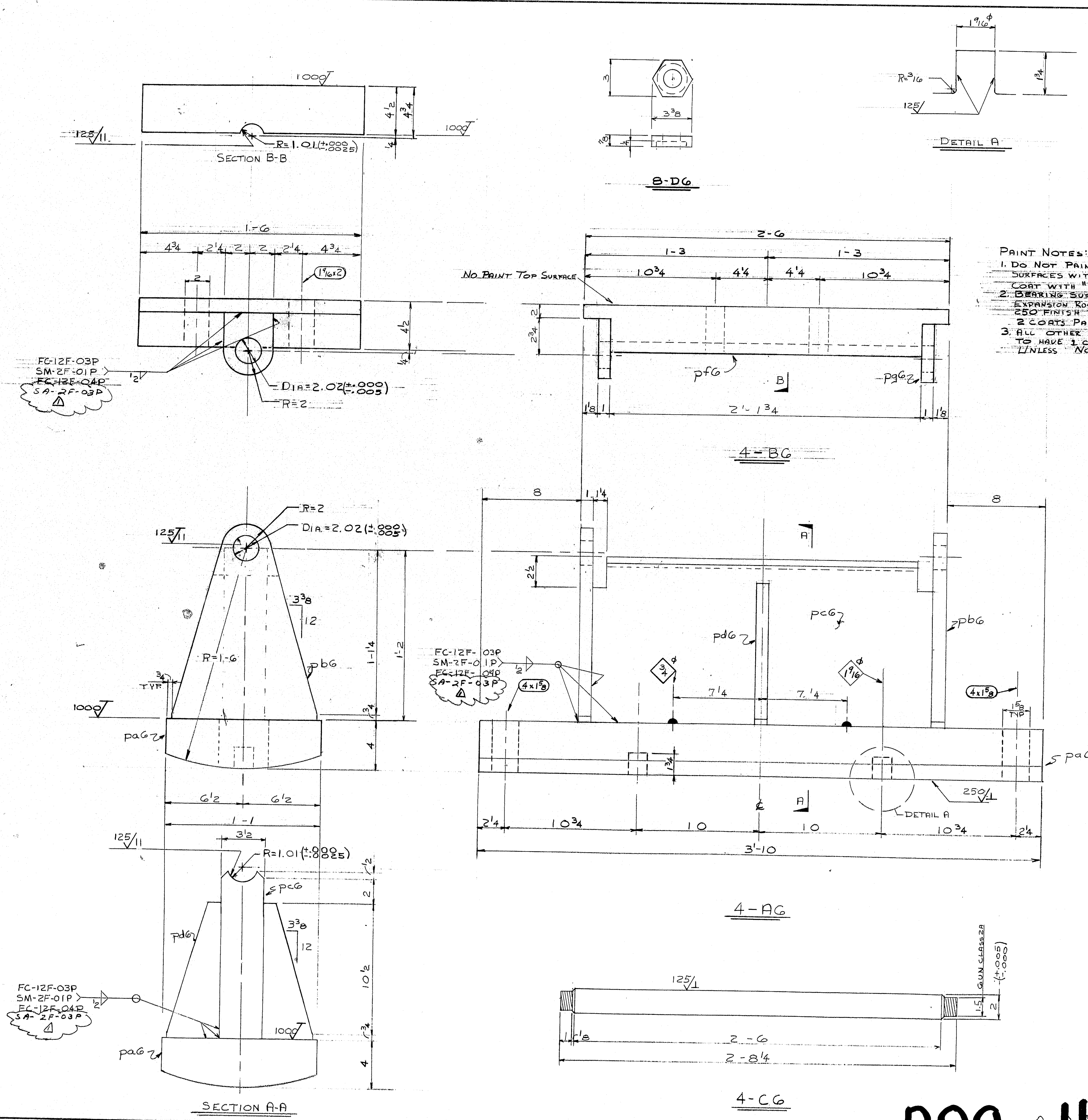
SHIPPING MARK	NO. PCS.	SUB-ASSEM.	SHAPE	LENGTH FT. IN.	Q OR S	CUT FROM NO. FT. IN.	REMARKS	WT.
AG	4	A7						
	4		4x28	3	10	1458 & 5817		5845
	8	ma7	bat 1 5/8"	0	2 1/2	1 2 6	ma7	
	8	C7	PL WASHER	0	1 1/2			
	16	pa7	PL 4x2	0	1 1/2		BEND 3/4"	
	8	pb7	PL 4x4	0	6			
	8	C7	HVY HEX 1/2-6	0	7 3/4		A325 TYPE 1	
ET	4		PREPARED PER 9-28	3	10		CONFORM TO MDOT 713.03	

SHIP PEDESTAL ASSEMBLED

WORK WITH DWG G

PRINT DISTRIBUTION	MATERIAL A3G	HOLES NOTED
FA 5-24-87	BOLTS A325 TYPE 1	ELECTRODEWELD PROCEDURE
EA 5-24-87	SURFACE PREP SPG	REF. DWG MDOT DWG 9.13
FA 6-15-87	PRIMER BASIC LEAD SILICO CHROMATE TO CONFORM	
UN 6-18	FINISH TO M.D.O.T. 708.02 STANDARD SPEC.	
AN 6-26-87	4 MILS WET FILM THICKNESS EACH COAT	
SHOP 6-29-87	<b>MAINE-CASCADE IRON WORKS</b> BAKER STREET, CLINTON, MAINE 04927 PHONE 207-428-2871	
SHOP 7-3-87		
ENG 8-15	DESCRIPTION <u>PEDESTAL ASSEMBLY</u> PROJECT <u>MESSALONSKEE STREAM &amp; QUARRO BRIDGE</u> LOCATION <u>WATERVILLE, MAINE</u> DESIGNER <u>M. D. O. T.</u> CUSTOMER <u>STETSON &amp; WATSON</u>	
SA 8-15		
REV A 6-13-87	JOBN. 84-545-3	DWG. NO. 7
CHKD JHS 5-23-87		REV. A
DRWN GAV 5-22-87		





PAINT NOTES:

1. DO NOT PAINT OR BLAST SURFACES WITH 125 FINISH. COAT WITH "NEVER-SEER".
2. BEARING SURFACES OF EXPANSION ROCKERS WITH 250 FINISH TO HAVE 147172.
3. ALL OTHER SURFACES TO HAVE 1 COAT PAINT UNLESS NOTED OTHERWISE.

# MATERIAL SCHEDULE

SHIPPING MARK	NO. PCS.	SUB. ASSEM.	SHAPE	LENGTH FT. IN.	O OR S.	CUT FROM NO. FT. IN.	REMARKS	WT.
AG	4		BEARING PEDESTAL				(1232)	
148310	4	pa6	R 4x13	3	10 #2873	4	18x3/40 MACH	2883
	8	pb6	R 1x11/2	1	4	SK		417
	4	pc6	R 3/2 x 13 3/4	2	4 #2873	4	13 3/4 x 2 1/4 MACH.	1529
	8	pd6	R 1x4	0	11 1/4	SK		102
	4	B6					(700)	
	4	pf6	R 2 x 18	2	6 #2873	4	18x2 1/4 MACH.	8757
	8	pg6	R 1x4	0	4 3/4	CRIPS		113
	4	CG	PIN					
	4		bar 2 1/4	2	8 1/4 #2873	4	18x2 1/4 MACH TO 2 1/4	145
	8	D6	2" RECESSED PIN NUTS					
Field 10	1		1 1/2" H.S.B.	0	9 1/4	2311	A-25 TYPE 1 W/ HYP HA NUT & 2 PW	
							FIELD TO VERIFY LENGTH	

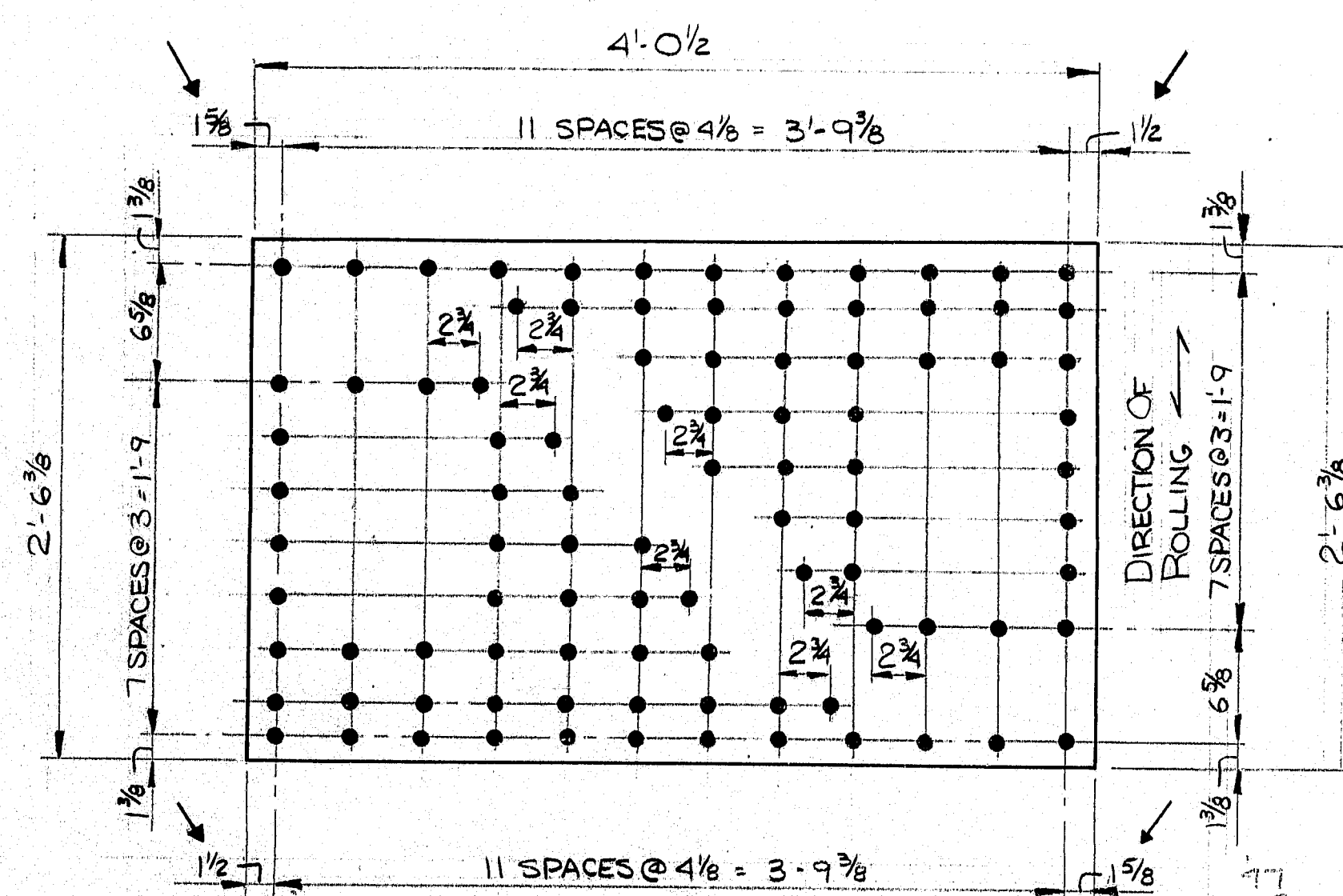
SHIP ASSEMBLED  
WORK WITH DWG 7

WELDS TO BE MAGNETIC PARTICLE TESTED

PRINT DISTRIBUTION	MATERIAL A36	HOLES NOTED
EA 5-24-84	BOLTS A325 TYPE 1	ELECTRODE WELD PROCEDURES
EA 5-24-84	SURFACE PREP SSPC-SP6	REF. DWG. M.D.O.T. DWG 9,13
EA 6-15-84	PRIMER BASIC LEAD SILICO CHROMATE TO CONFORM	
EA 6-18	FINISH TO MDOT 708.02 STANDARD SPEC.	
EA 6-20-84	4 MILS WET FILM THICKNESS EACH COAT	
EA 6-29-84	<b>MAINE-CASCADE IRON WORKS</b>	
EA 7-3-84	BAKER STREET, CLINTON, MAINE 04927	
EA 8-27	PHONE 207-428-2571	
	DESCRIPTION EXPANSION PEDESTAL	
	PROJECT MESSALONKEE STREAM & QUARRY RD. BRIDGE	
	LOCATION WATERVILLE, MAINE	IR-95-G(52)/25
	DESIGNER M.D.O.T.	IR-75-G(26)/123
	CUSTOMER STETSON & WATSON	
	JOB NO. 84-545-3	DWG. NO. 6
		REV. A

R89-A

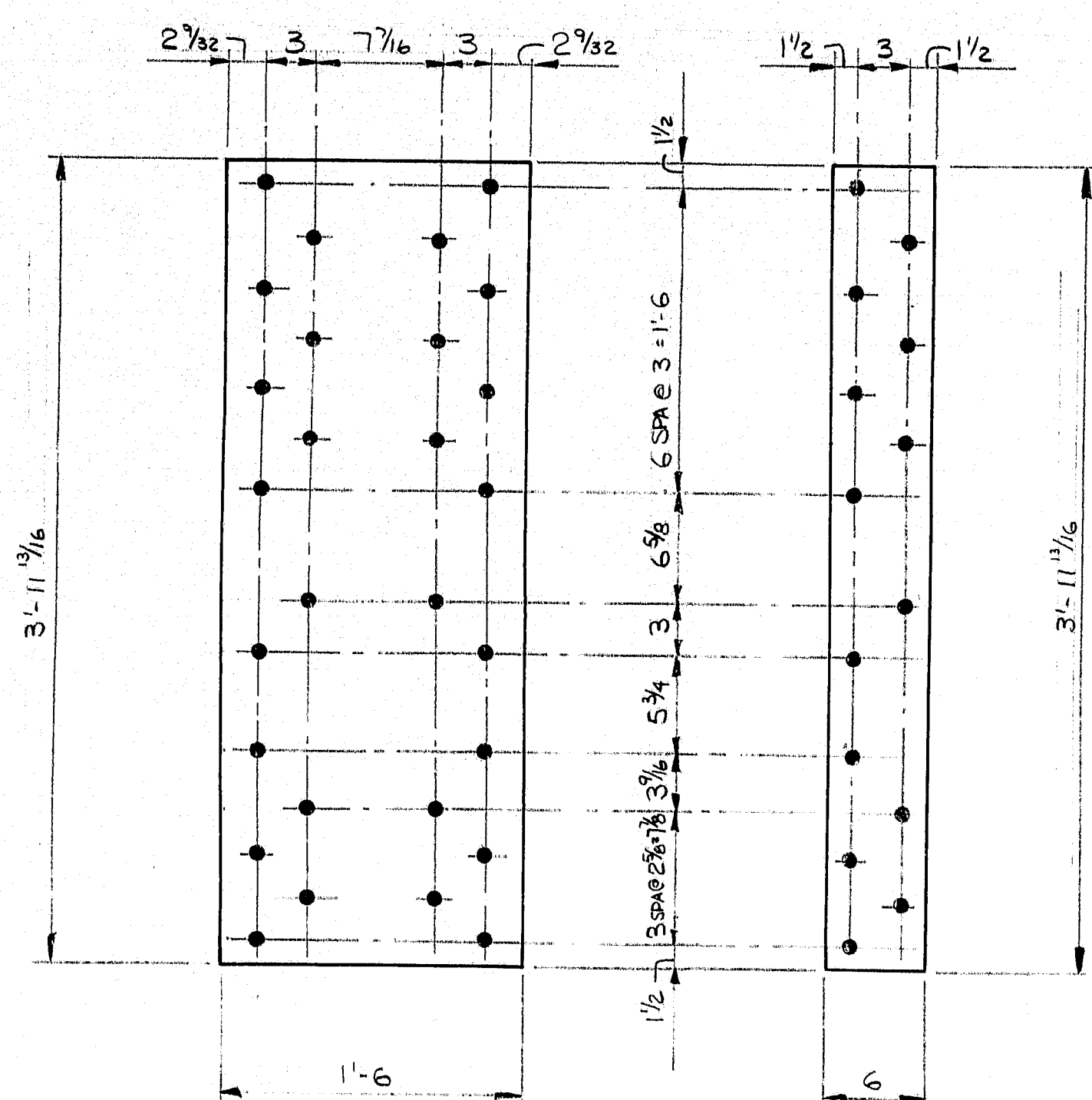




16 ~ A5  
(REF. PLATE "A" ON DRAWING 8)  
A36

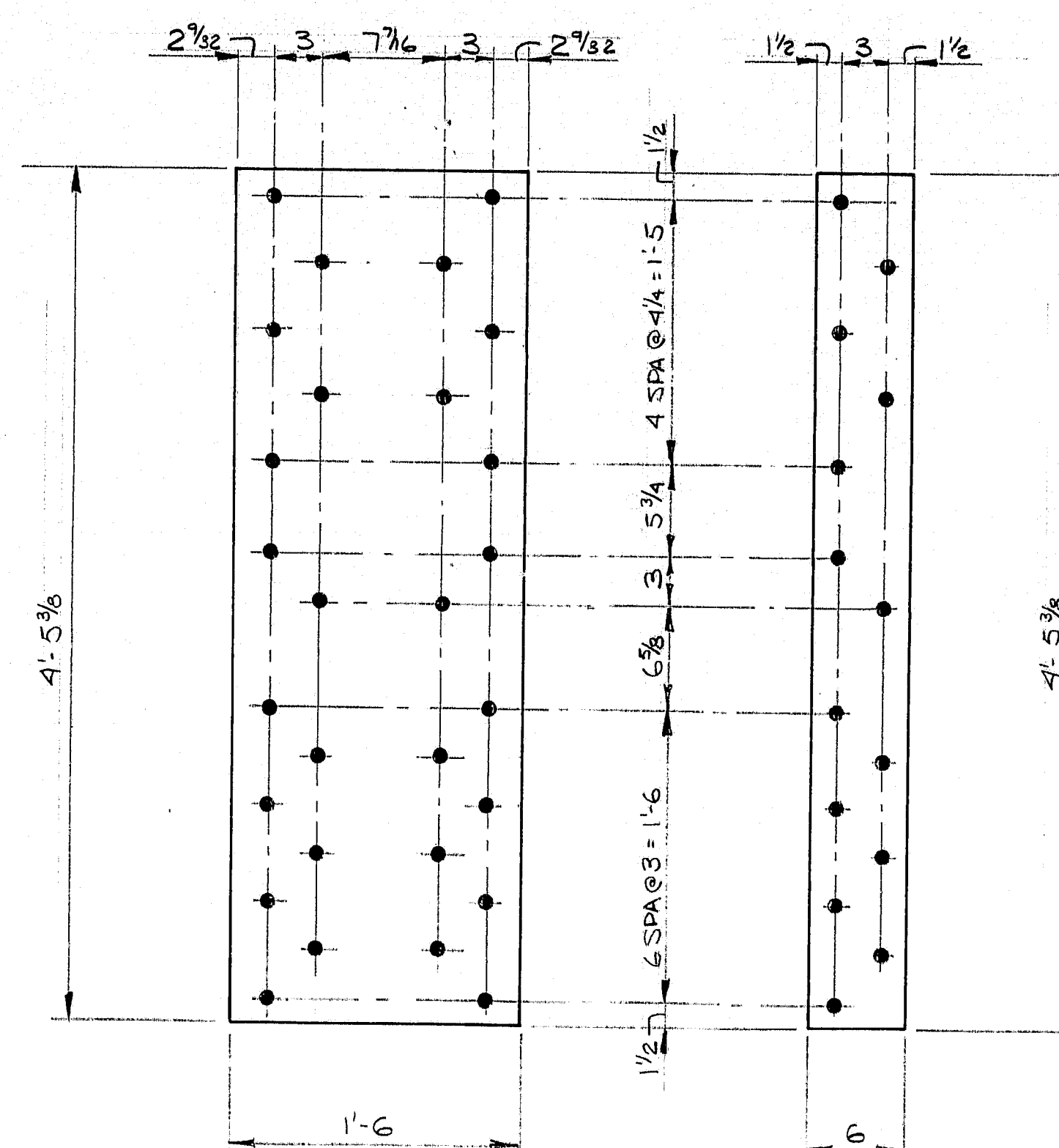
NOTE:  
ALL DIMENSIONS SHOWN  
TAKEN FROM CONTRACT  
DRAWINGS. TEMPLATES WILL  
BE MADE IN THE FIELD TO  
VERIFY DIMENSIONS

ONLY DRILL HOLES USING TEMPLATES  
MARK ALL PIECES BY PER IDENTIFICATION MARKS  
ON THE TEMPLATES



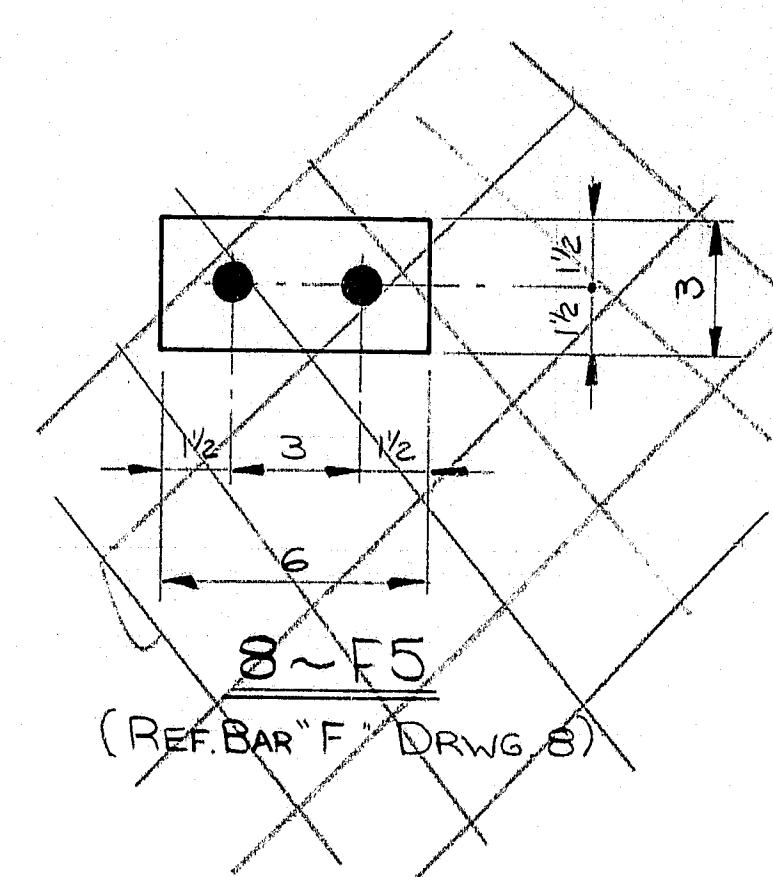
8 ~ B5  
(REF. R "B" DRWG 8)  
A588

16 ~ C5  
(REF. BAR "C" DRWG 8)  
A588



8 ~ D5  
(REF. R "D" DRWG. 8)  
A588

16 ~ E5  
(REF. BAR "E" DRWG. 8)  
A588



# MATERIAL SCHEDULE

SHIPPING MARK	NO. PCS.	SUB-ASSEM.	SHAPE	LENGTH FT. IN.	O OR S	CUT FROM NO. FT. IN.	REMARKS (334)	WT.
A5	16		R 3/8 X 48 1/2	2 6 3/8	5-2710	2 6 3/8 X 48 1/2	CHARPY V. NOTCH	A36
B5	8		R 5/8 X 18	3 11 1/2	23499	1 9 1/2 X 350	TEST REQ'D	1271
C5	16		R 3/8 X 6	3 11 1/2		1 9 1/2 X 20	(11)	A588 1140
D5	8		R 5/8 X 18	4 5 3/8		as above	(12)	A588 1377
E5	16		R 3/8 X 6	4 5 3/8		as above	(10)	A588 1240

TO MEET PAR, 713.01  
OF STD. SPEC.  
15 FT. LB. @ 90° F.

15 FT. LB. @ 90° F.  
713.01

NOTES: STATE INSPECTOR TO WITNESS  
CUTTING OF A5 PLATES.

TOTAL WEIGHT 8973

PRINT DISTRIBUTION	MATERIAL NOTED	HOLES 15/16 Ø
FA 5-18-89	BOLTS 3/8" A325 TYPE 1	ELECTRODE
FA 5-18-89	SURFACE PREP SSPC-SP6	REF. DWG. MDOOT DRWG 8
FA 6-14-89	PRIMER	
FA 6-14-89	FINISH	
FA 6-28-89		
FA 6-28-89		
FA 7-17		
FA 7-19		
FA 7-19		
FA 7-19		

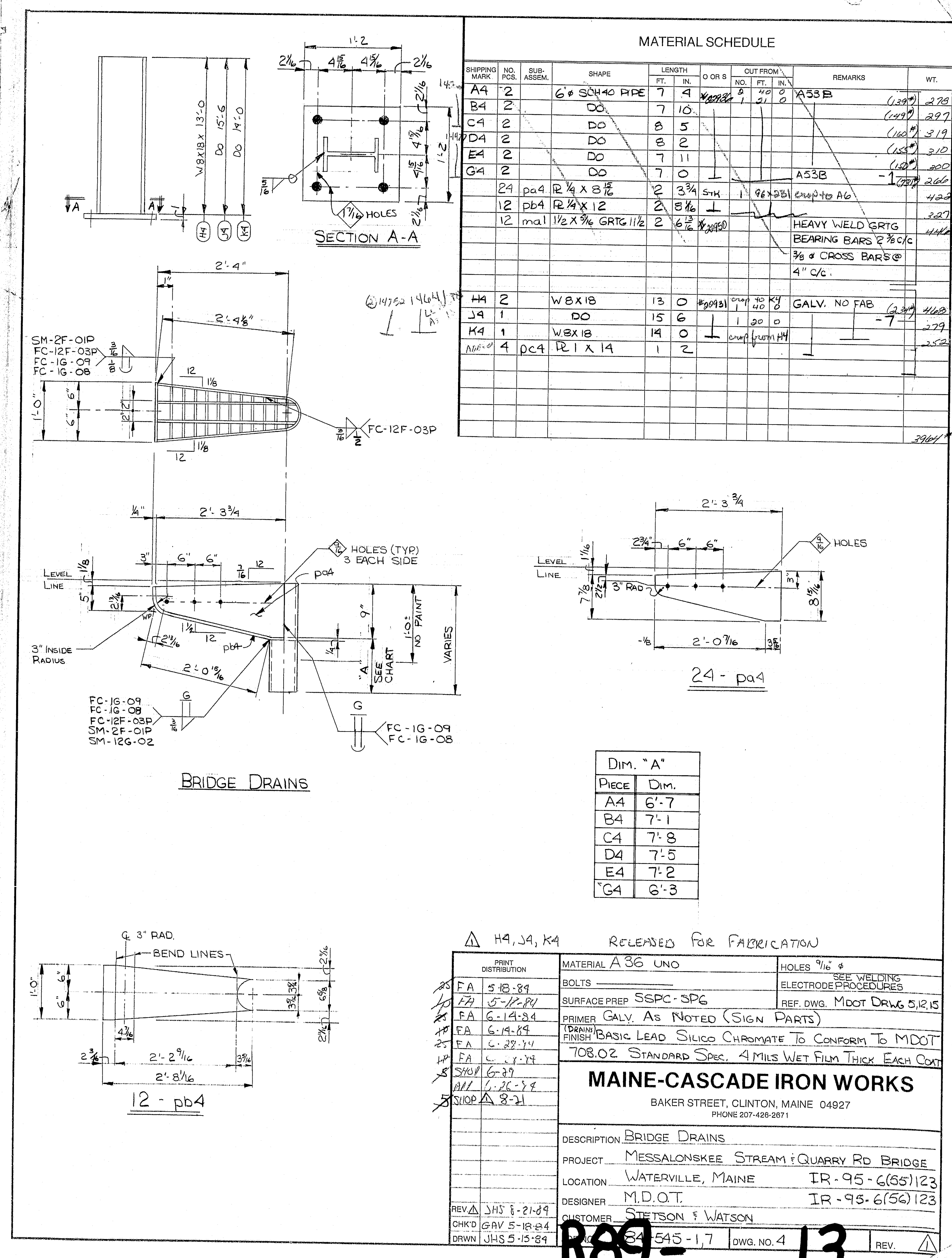
## MAINE-CASCADE IRON WORKS

BAKER STREET, CLINTON, MAINE 04927  
PHONE 207-428-2871

DESCRIPTION: SPLICE PLATES  
PROJECT: MESSALONSKEE STREAM & QUARRY RD. BRIDGE  
LOCATION: WATERVILLE, MAINE IR-95-6(55)123  
DESIGNER: M.D.O.T. IR-95-6(56)123  
CUSTOMER: STETSON & WATSON

JOB NO. 84-545-2 DWG. NO. 5 REV. Δ

R89-12

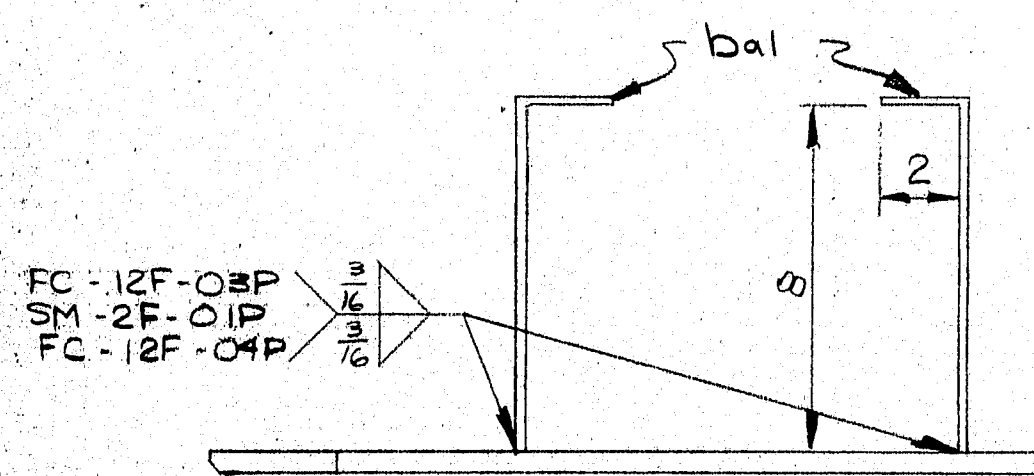


R89-13



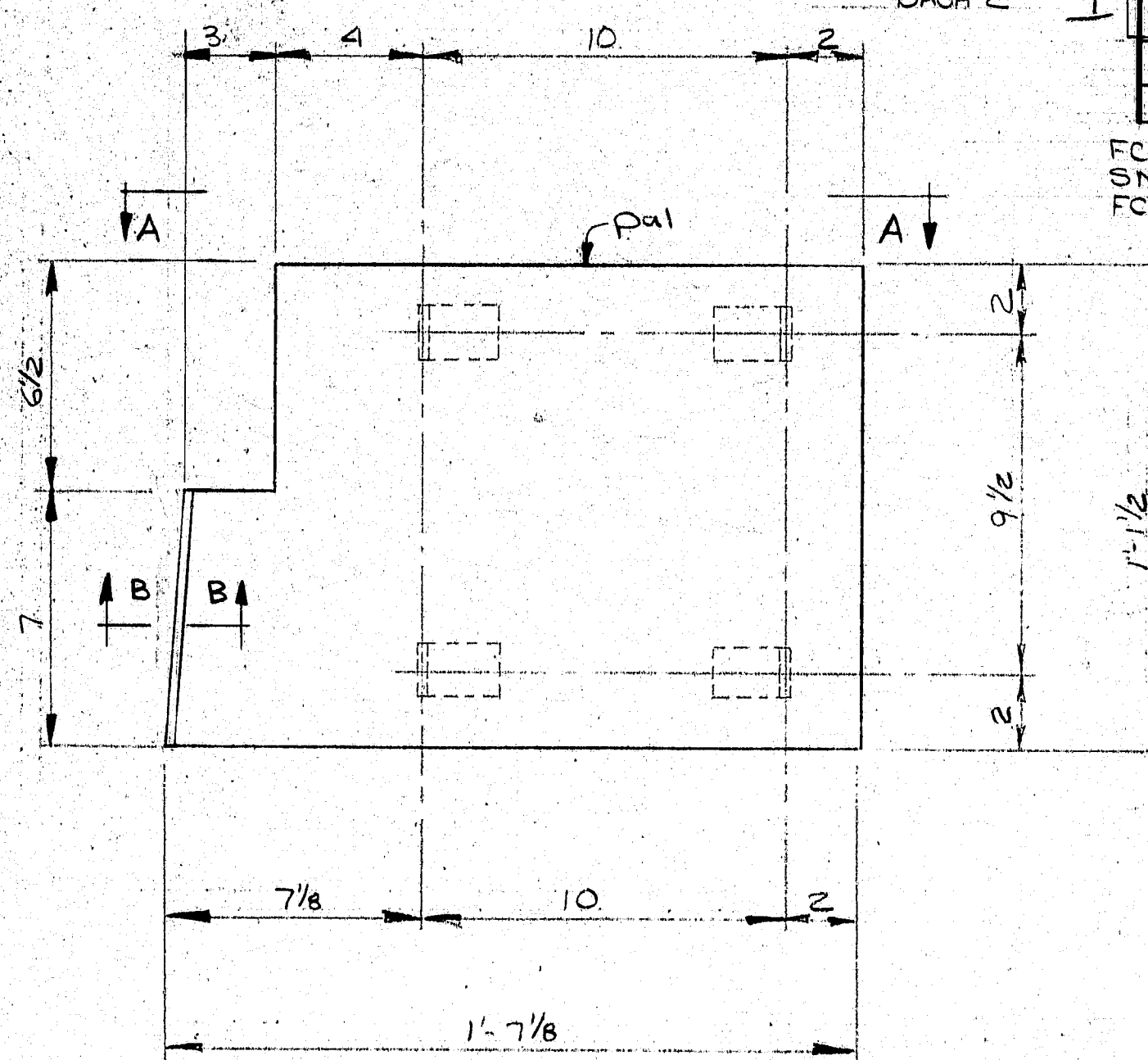
JOINT OPENING @ 45° F =

FOR P3 = 1 1/4" @ 1" TO JOINT  
FOR Q3 = 2 1/4" @ 1" TO JOINT  
FOR S3 = 1 1/4" @ 1" TO JOINT

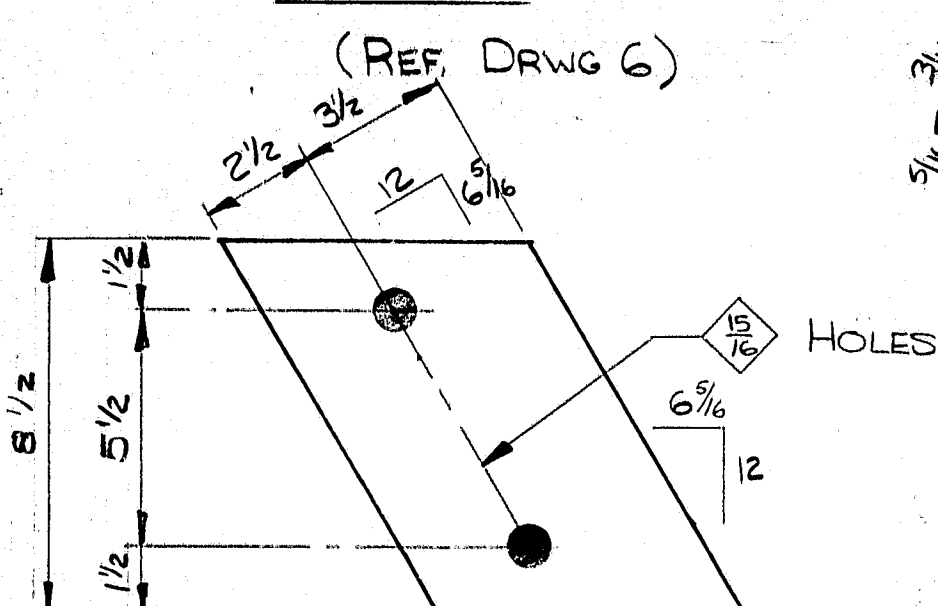


SECTION A-A

PIERS B, E, G, J, P, R, T  
PIERS A, C, D, F, H, K, L, M, N, Q, S, U, V, W, X, Y, Z



12~A3 (AS SHOWN)  
12~B3 (OPP HAND)



30~H3  
(REF DRWG 4)

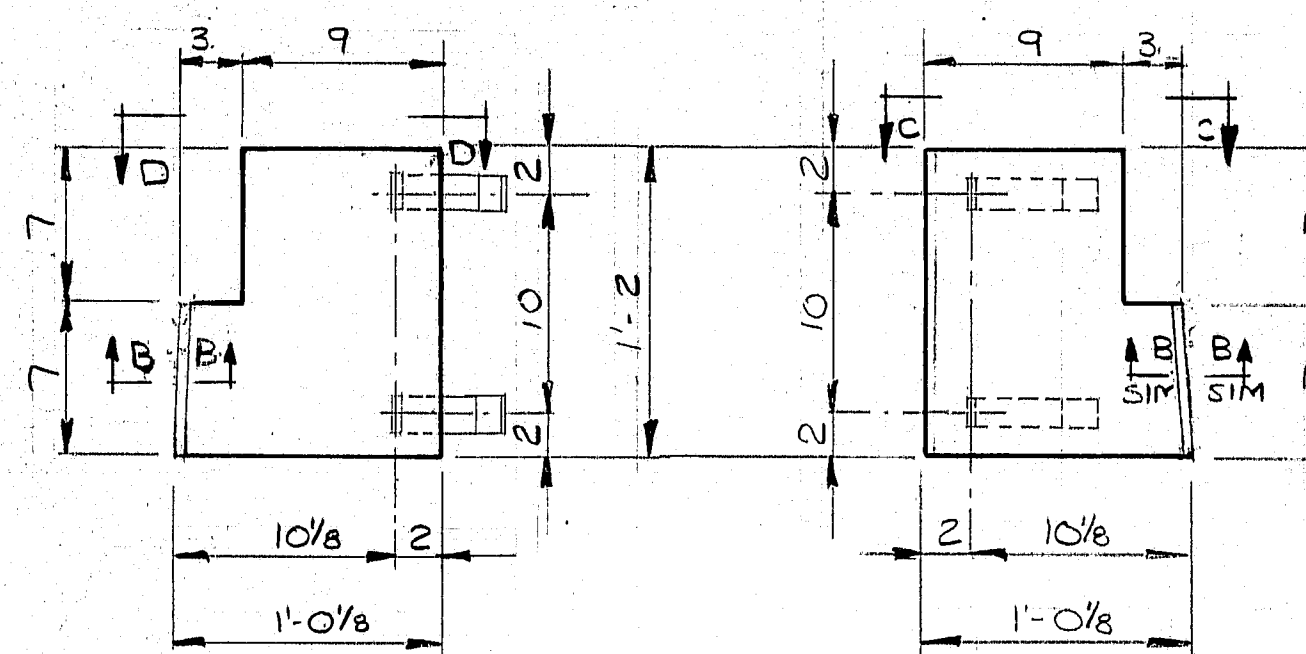
REV 4 - add P.S. bolts

MATERIAL SCHEDULE

SHIPPING MARK	NO. PCS	SUB-ASSEM.	SHAPE	LENGTH FT.	IN.	O OR S	CUT FROM NO.	FT.	IN.	REMARKS	WT.
A3	12		AS SHOWN								
B3	12		OPP HAND								
	24	bal	R 1/2 X 13 1/2	1	7 1/2	#8	23	30	0	BEND 2" E	88.6
	96	bal	BAR 1 X 1/4	0	10		23	30	0	(80)	68
C3	6		BAR 3/4	35	0		12	20	0	(53)	315
D3	6		BAR 3/4	31	4		12	20	0	(47)	282
E3	12		R 1/2 X 12 1/8	1	2	#8	23	30	0		41
G3	12		R 1/2 X 12 1/8	1	2	#8	23	30	0		41
	48	bal								(7)	
H3	30		R 3/4 X 6	1	0 3/4		2	20	0	NEST (35)	975
J3	30		R 3/4 X 4	0	7					NO FAB (18)	525
K3	342		BAR 1 X 3/8	1	0					NO FAB (1)	438
M3	397		BAR 1 X 1/4	0	10					BEND 2" E (1)	281
P3	2		COMP SEALS	37	0 1/4					ACME J-162	
Q3	4		DO	37	0 1/4					ACME J-400	
S3	6		DO	35	4					ACME J-200	
FIELD MATERIALS											
FIELD	519		7/8" A325 HEX I	0	4 1/2					W/ NUTS & WASH	
	767		7/8" A325 HEX I	0	4 1/4						
	196		7/8" A325 HEX I	0	3 1/2						
Total											386.0

FC-12F-03P  
SM-2F-01P  
FC-12F-04P

SECTION D-D



12~E3  
(REF DRWG 4  
PLAN VIEW)

12~G3  
(REF DRWG 4  
PLAN VIEW)

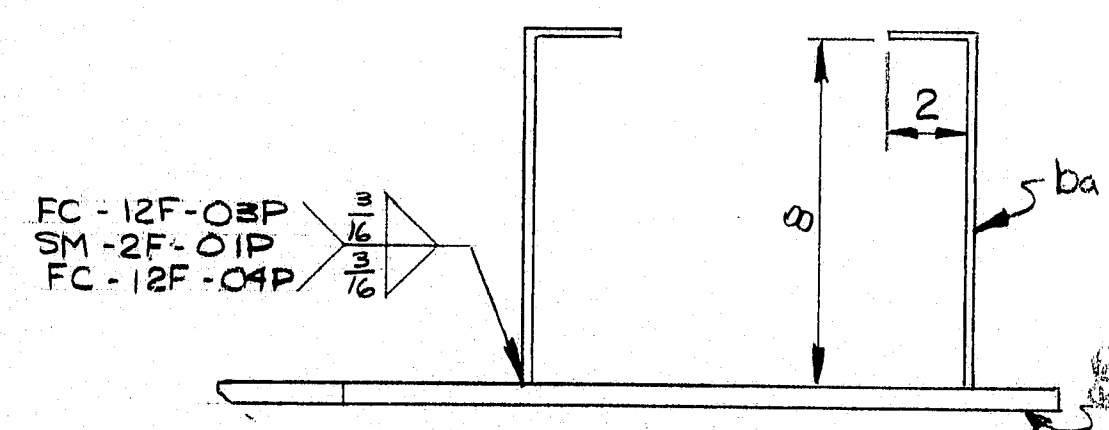
PRINT DISTRIBUTION		MATERIAL A36		HOLES	
FA	5-18-79	BOLTS A325 TYPE I		ELECTRODE WELD PROCEDURES	
FA	5-18-79	SURFACE PREP SSPC-SP6		REF. DRG. MDOOT DRWG 6.4	
FA	6-14-84	PRIMER			
FA	6-14-84	FINISH			
SHOP	6-17	<b>MAINE-CASCADE IRON WORKS</b> BAKER STREET, CLINTON, MAINE 04927 PHONE 207-426-2671 DESCRIPTION: REPLACEMENT STEEL FOR PIERS E, G, J, P, R, T. PROJECT: MESSALONSKEE BRIDGE & M.C.R.R. BRIDGE LOCATION: WATERVILLE, MAINE IR-95-6(56)123 DESIGNER: M.D.O.T. IR-95-6(56)123 CUSTOMER: STETSON & WATSON 84-545.5.2 DWG. NO. 3			
APP	6-20-84				
REV	6-22-84				
REV	6-22-84				
REV	6-22-84				
REV	7-16				
CHKD	5-18-84				
DRWN	5-14-84				

R89

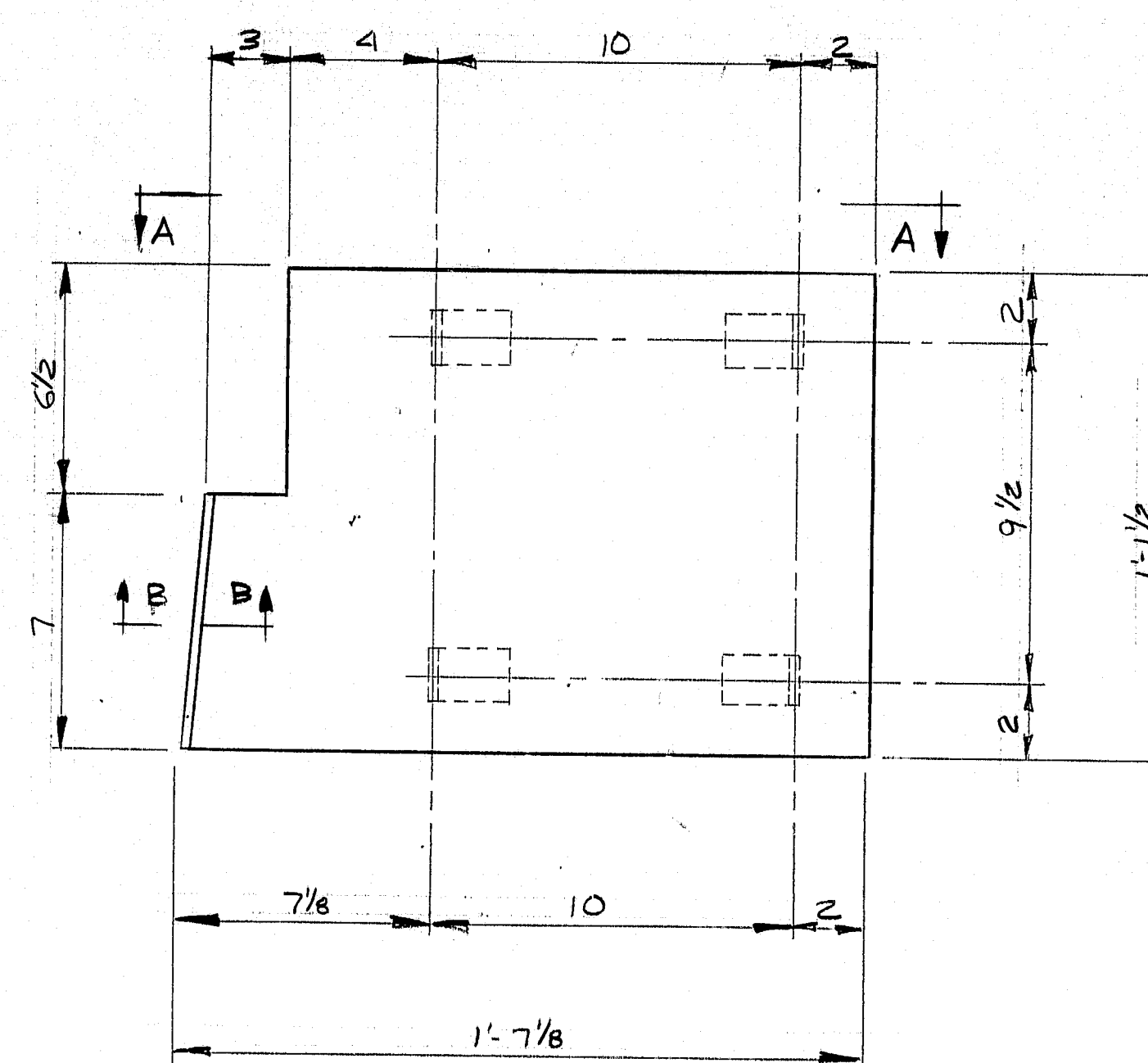
14



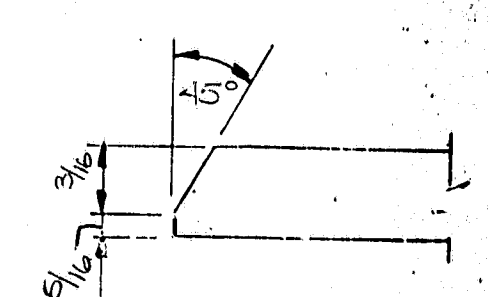
JOINT OPENING @ 45° F. 1/4"



SECTION A-A



20~A2 (As SHOWN)  
20~B2 (OPP HAND)

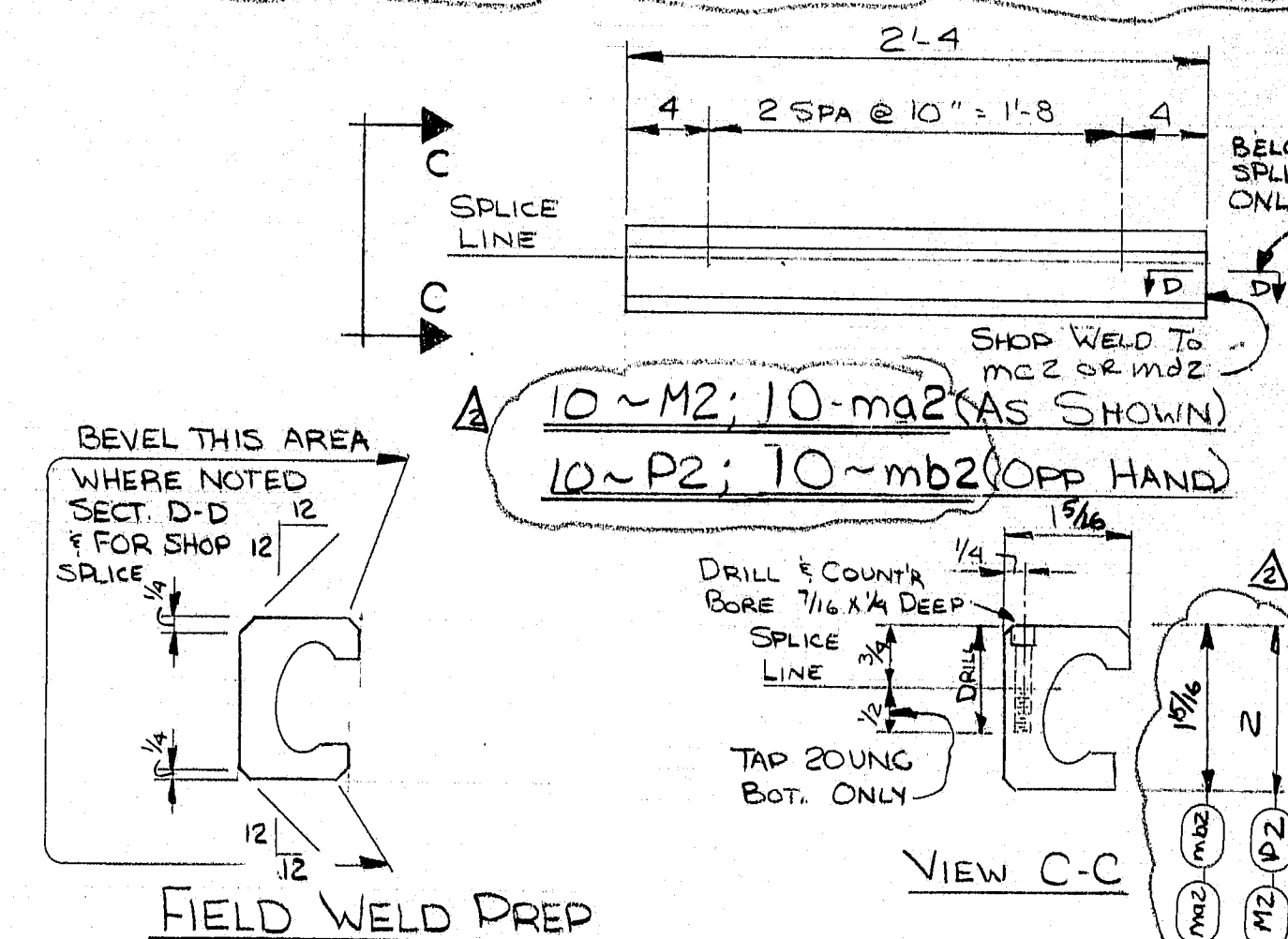


SECTION B-B

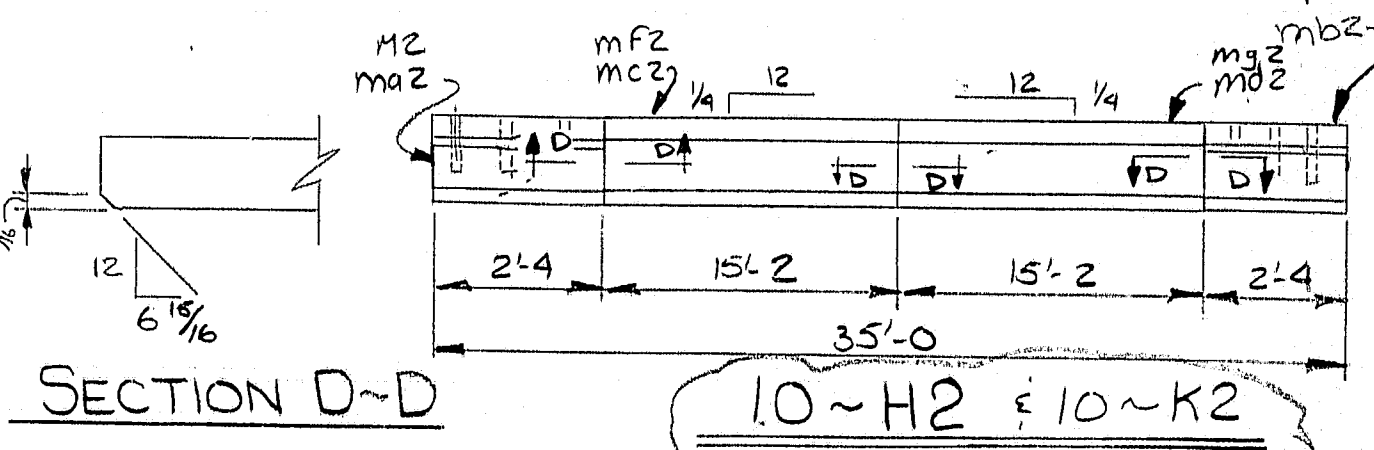
MATERIAL SCHEDULE

SHIPPING MARK	NO. PCS.	SUB-ASSEM.	SHAPE	LENGTH FT. IN.	O OR S	CUT FROM NO. FT. IN.	REMARKS	WT.
A2	20		AS SHOWN					
B2	20		OPP HAND					
40	160	ba1	12 1/2 X 13 1/2	1 7/8	1	20 20 0	BEND 7/2 (79)	134.3
C2	10		BAR 3/4	31	4	20 20 0		113
D2	50		12 3/4 X 4	0	7	3 20 0	NO FAB (47)	470
E2	316		BAR 1 X 1/4	0	10	3 20 0	BEND 7/2 (6)	297
J2	5		GLAND SEALS	35	4		ACME AS90(1)	224
G2	5		GLAND SEALS	35	4		ONFLEX 40SF	
H2	10		ASSEMBLIES					
10	10	ma2	EXTRUSION	15	2		ONFLEX TYPE A BIE	
10	10	ma2	EXTRUSION	15	2		BIE	
10	10	ma2	EXTRUSION	2	4		ONFLEX TYPE A (SPIT)	
10	10	mb2	EXTRUSION	2	4			
123	10	SHO	1/4" SOCKET HEAD CAP SCREWS	0	1			
K2	10	mf2	EXTRUSION	15	2		ACME TYPE 'A' BIE	
10	10	mg2	EXTRUSION	15	2		BIE	
M2	10		EXTRUSION	2	4		ACME TYPE 'A' (SP4)	
P2	10		EXTRUSION	2	4			

TOTAL 436.7



FIELD WELD PREP

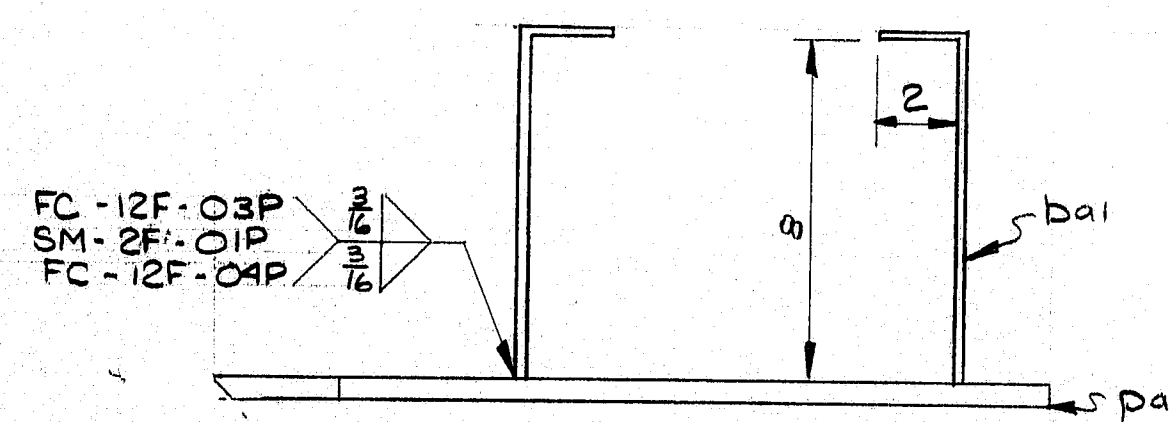


SECTION D-D

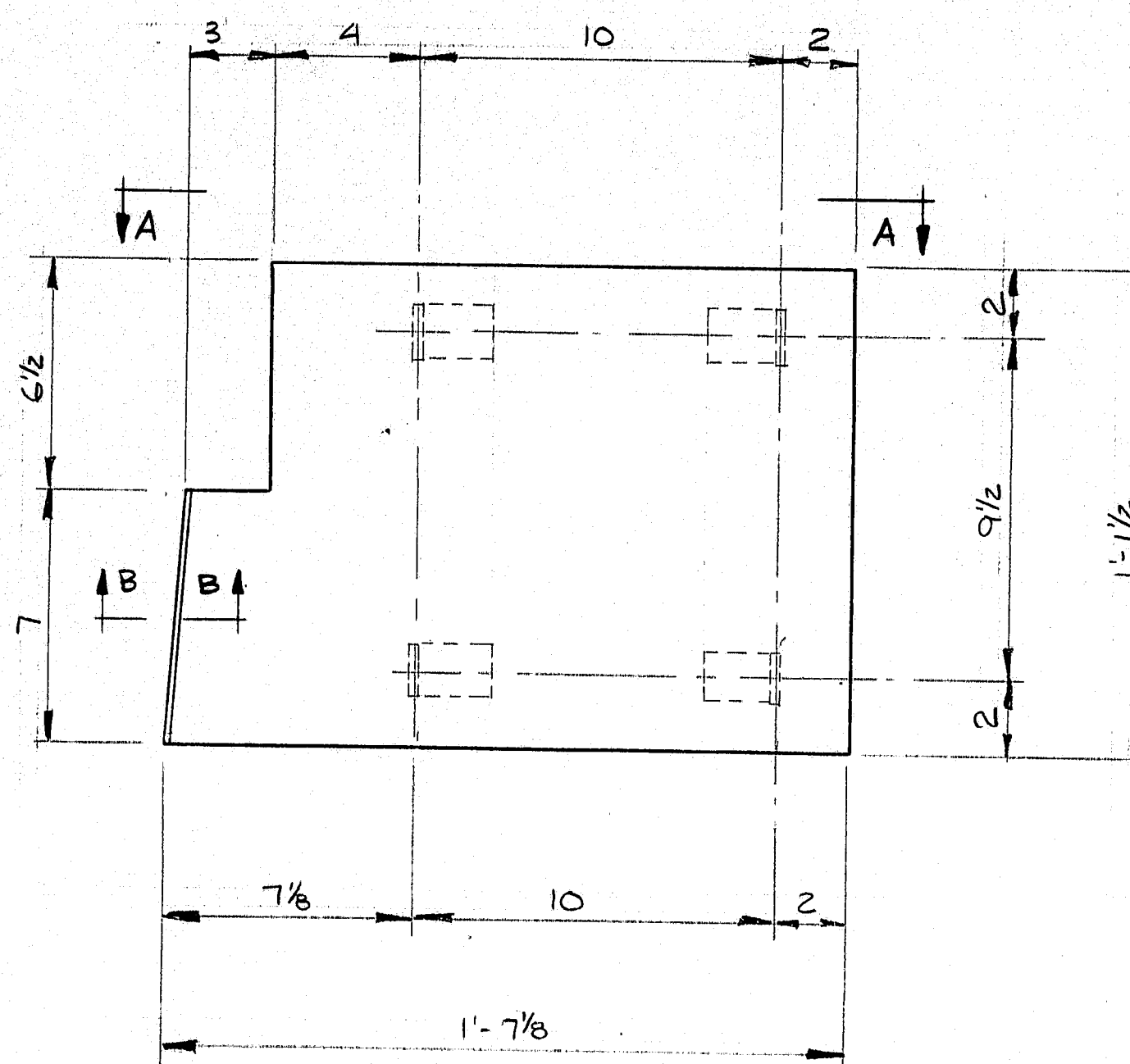
PRINT DISTRIBUTION	MATERIAL A36	HOLES
28 FA 5-18-84	BOLTS A307	ELECTRODE WELD PROCEDURES
10 FA 5-12-84	SURFACE PREP SSPC-SP6	REF. DWG. M00T DRWG 7
23 FA 6-14-84	PRIMER	
10 FA 6-14-84	FINISH	
23 FA 6-28-84		
10 FA 6-28-84		
5 SHOP 2-9-84		
7 SHOP 7-12-84		
28 ADD 7-13-84		
28 FVU 8-17-84		
28 SHOP 8-27-84		
<p><b>MAINE-CASCADE IRON WORKS</b> BAKER STREET, CLINTON, MAINE 04927 PHONE 207-428-2871</p>		
<p>DESCRIPTION REPLACEMENT STEEL FOR PIERS C,D,E,H,K,N,O PROJECT MESSALONSKEE STREAM &amp; QUARRY RD BRIDGE LOCATION WATERVILLE, MAINE IR-95-6(55)123 DESIGNER M.D.O.T. IR-95-6(56)123 CUSTOMER STETSON &amp; WATSON CHKD GAV 5-18-84 DRWN JHS 5-14-84</p>		
545.6	NO. 2	REV. A

R89-15

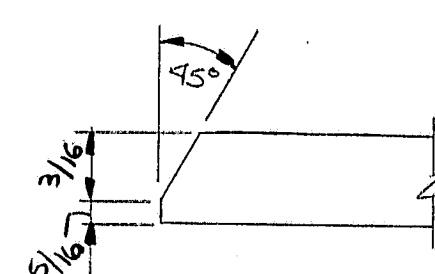




SECTION A-A



4 ~ A1 (AS SHOWN)  
4 ~ B1 (OPP HAND)



SECTION B-B

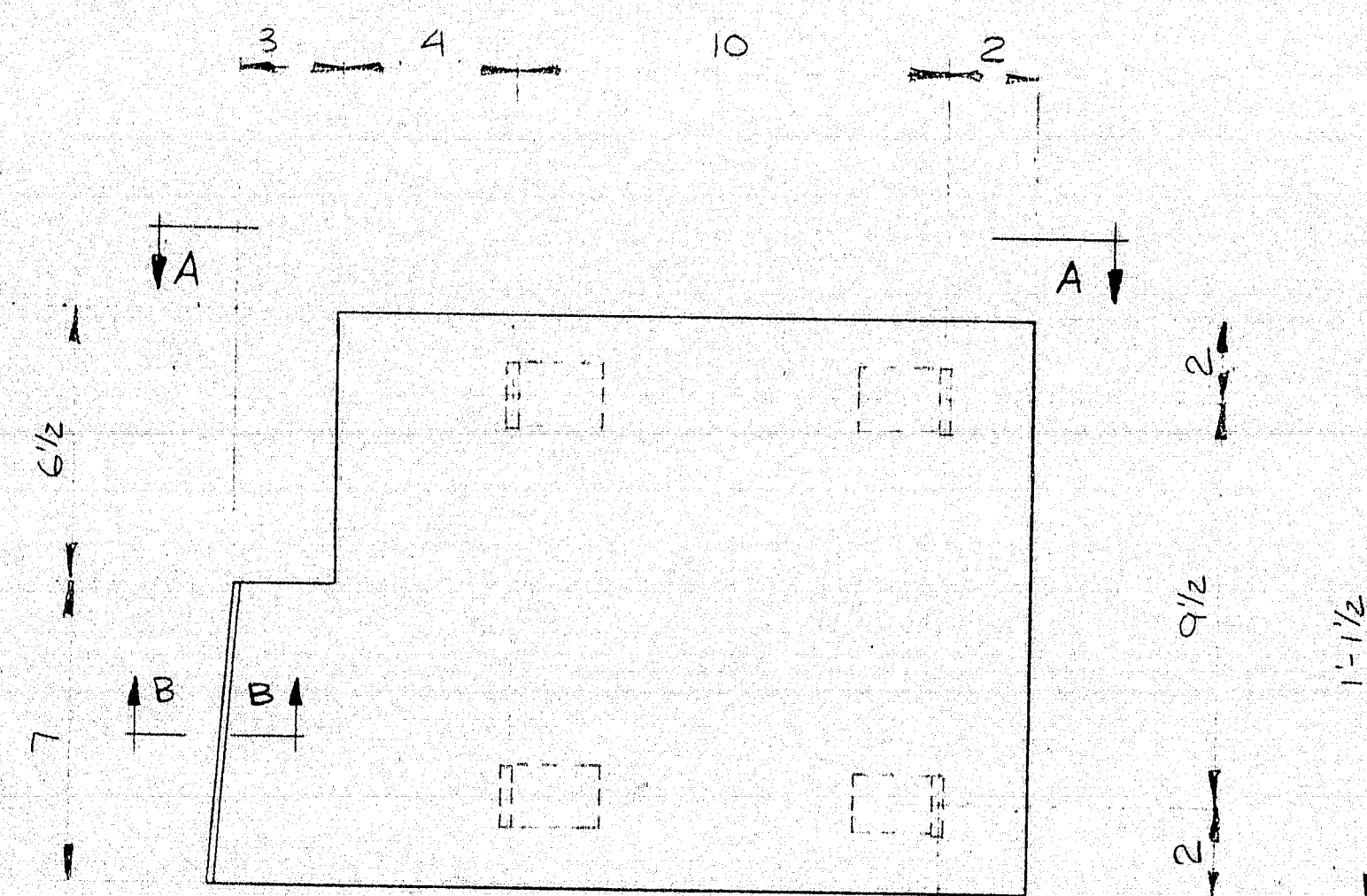
MATERIAL SCHEDULE

SHIPPING MARK	NO. PCS.	SUB. ASSEM.	SHAPE	LENGTH FT. IN.	O OR S	CUT FROM NO. FT. IN.	REMARKS	WT.
A1	4		AS SHOWN				(39")	
B1	4		OPP HAND				(39")	
	8	pal	R 1/2 X 13 1/2	1	7/8	1	9/16 X 240 cut to B2, B3, B3, B3	2.93
	32	bal	BAR 1 X 1/4	0	10	2	BEND 2	2.3
C1	2		BAR 3/4	31	4	4	20 0	9.4
D1	56		BAR 1 X 3/8	1	0	3	20 0 cut to K3	2.2
E1	2		COMP. SEAL	35	4		ACME J 300	-
JOINT OPENING @ 45° F = 1 5/16								
48.2								

PRINT DISTRIBUTION	MATERIAL A36	HOLES
FA 5-18-84	BOLTS	ELECTRODE WELDING PROCEDURES
EA 5-17-84	SURFACE PREP SSPC-SP6	REF. DWG. MDOT DRWG 5
EA 6-14-84	PRIMER	
EA 6-14-84	FINISH	
SHO 6-29		
ALL 6-26-84		
END 6-28-84		
END 6-28-84		
MAINE-CASCADE IRON WORKS		
BAKER STREET, CLINTON, MAINE 04927		
PHONE 207-428-2871		
DESCRIPTION CURB PLATE & RETENSION BARS FOR ABUT #1		
PROJECT MESSALONSKEE STREAM & QUARRY RD BRIDGE		
LOCATION WATERVILLE, MAINE IR-95-6(55)123		
DESIGNER M.D.O.T. IR-95-6(56)123		
CUSTOMER STETSON & WATSON		
REV. A		
CHKD GAV 5-18-84		
DRAWN JHS 5-14-84	JOB NO. 84-545-4	

R89-16



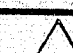


Technical drawing of a mechanical part. The part has a total height of  $\frac{5}{16}$  and a top flange thickness of  $\frac{3}{16}$ . The top surface is inclined at a  $45^\circ$  angle. The drawing includes a break line on the right side, indicating that the part is longer than shown.

99-144

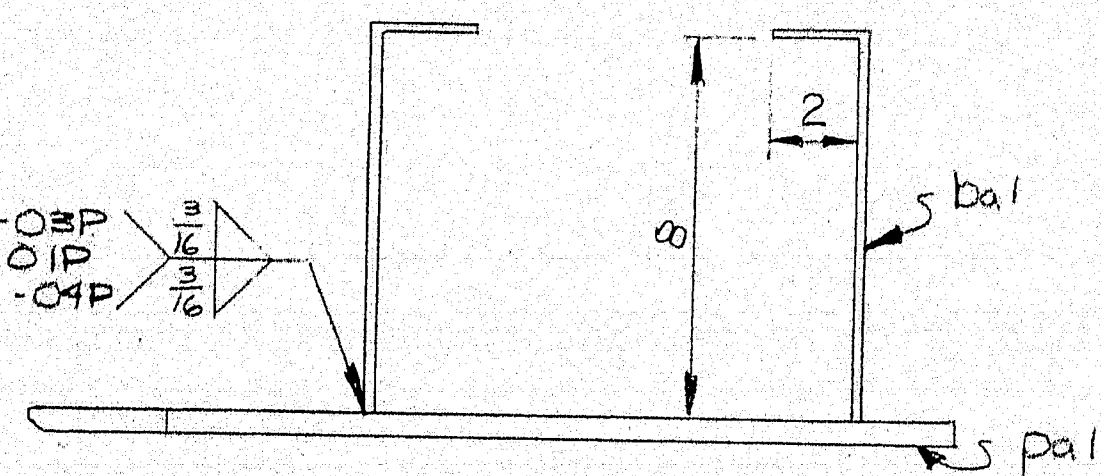
STATE OF MAINE  
DEPARTMENT OF TRANSPORTATION  
☒ Approved ☐ Returned for Corrections  
JUL 11 1984  
☐ Approved as noted ☐ Rejected  
K. Jacobs  
WELDING ENGR.

OFFICE COPY (4)  
RECEIVED JUL - 3 1984  
CHECKED BY  
REVIEWED BY 27/10/84

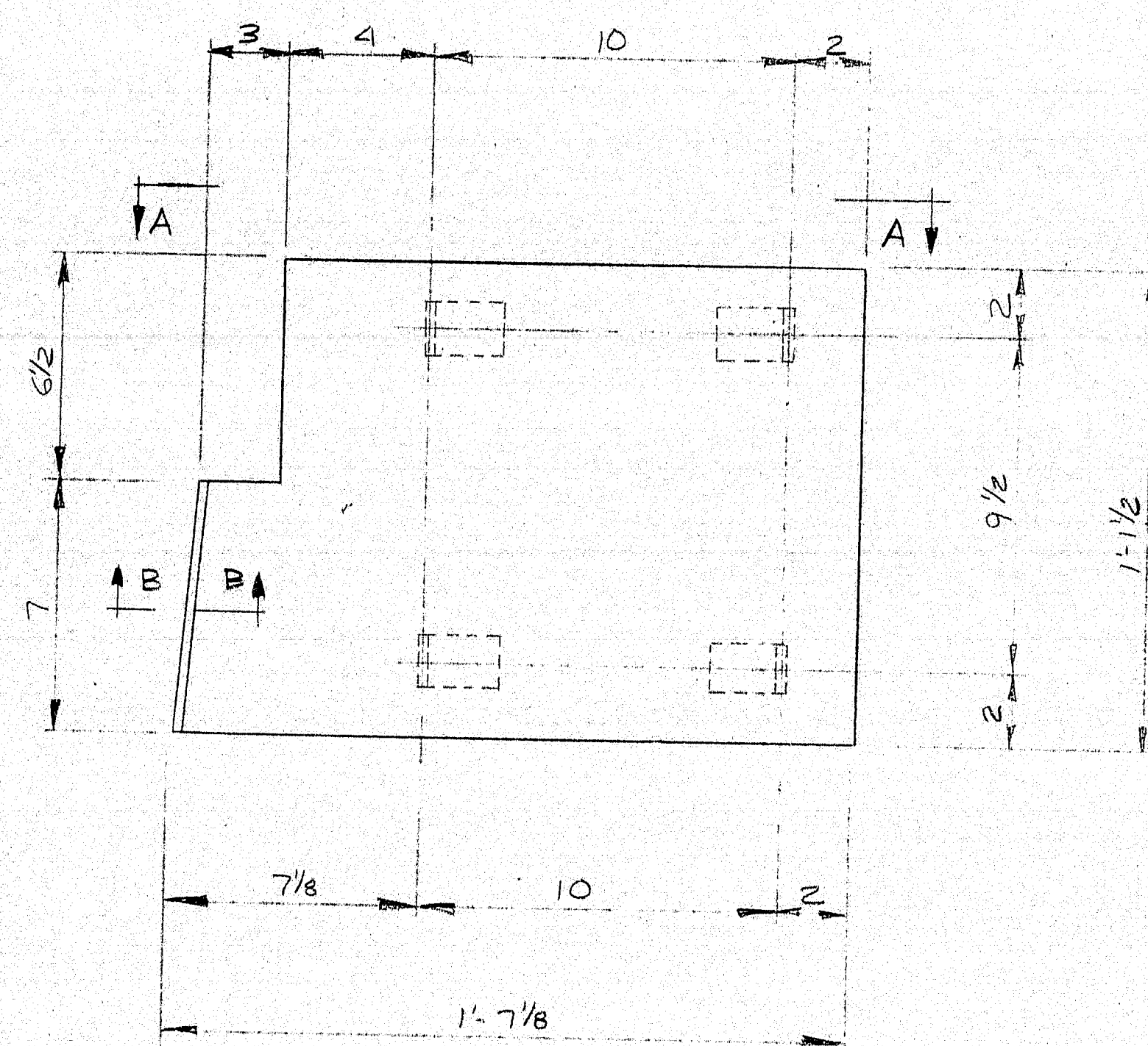
PRINT DISTRIBUTION		MATERIAL <u>A36</u>		HOLES	
FA	5-18-84	BOLTS		ELECTRODE WELDING PROCEDURE	
LAH	5-18-84	SURFACE PREP <u>SSPC-SP6</u>		REF. DWG. <u>MDOT DRWG 5</u>	
PA	6-14-84	PRIMER			
PA	6-14-84	FINISH		<b>FOR YOUR USE</b>	
SHOP		<b>MAINE-CASCADE IRON WORKS</b> BAKER STREET, CLINTON, MAINE 04927 PHONE 207-426-2671			
APP	6-26-84				
FNU	6-28-84				
FNU	6-28-84				
REV		DESCRIPTION <u>CURB PLATE &amp; RETENSION BARS FOR ABUT #1</u>			
CHK'D		PROJECT <u>MESSALONSKEE STREAM &amp; QUARRY RD BRIDGE</u>			
DRAWN		LOCATION <u>WATERVILLE, MAINE</u>		<u>IR-95-6(35)123</u>	
		DESIGNER <u>M. D. O'T.</u>		<u>&amp; IR-95-6(56)123</u>	
		CUSTOMER <u>STETSON &amp; WATSON</u>			
		JOB NO. <u>84-545-4</u>		DWG. NO. 1	
				REV. 	



FO - 12F-OSP  
TM - 2F-OIP  
FC - 12F-OMP

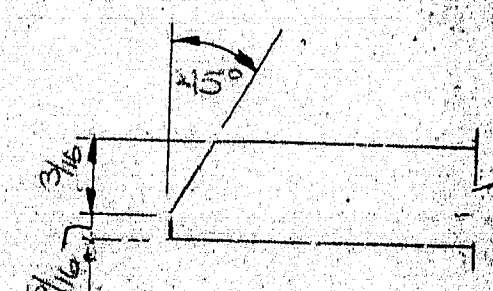


SECTION A-A



20~A2 (As SHOWN)  
20~B2 (OPP HAND)

STATE OF MAINE  
DEPARTMENT OF TRANSPORTATION  
JUL 11 1984  
K. Jacobs  
WELDING ENGR.



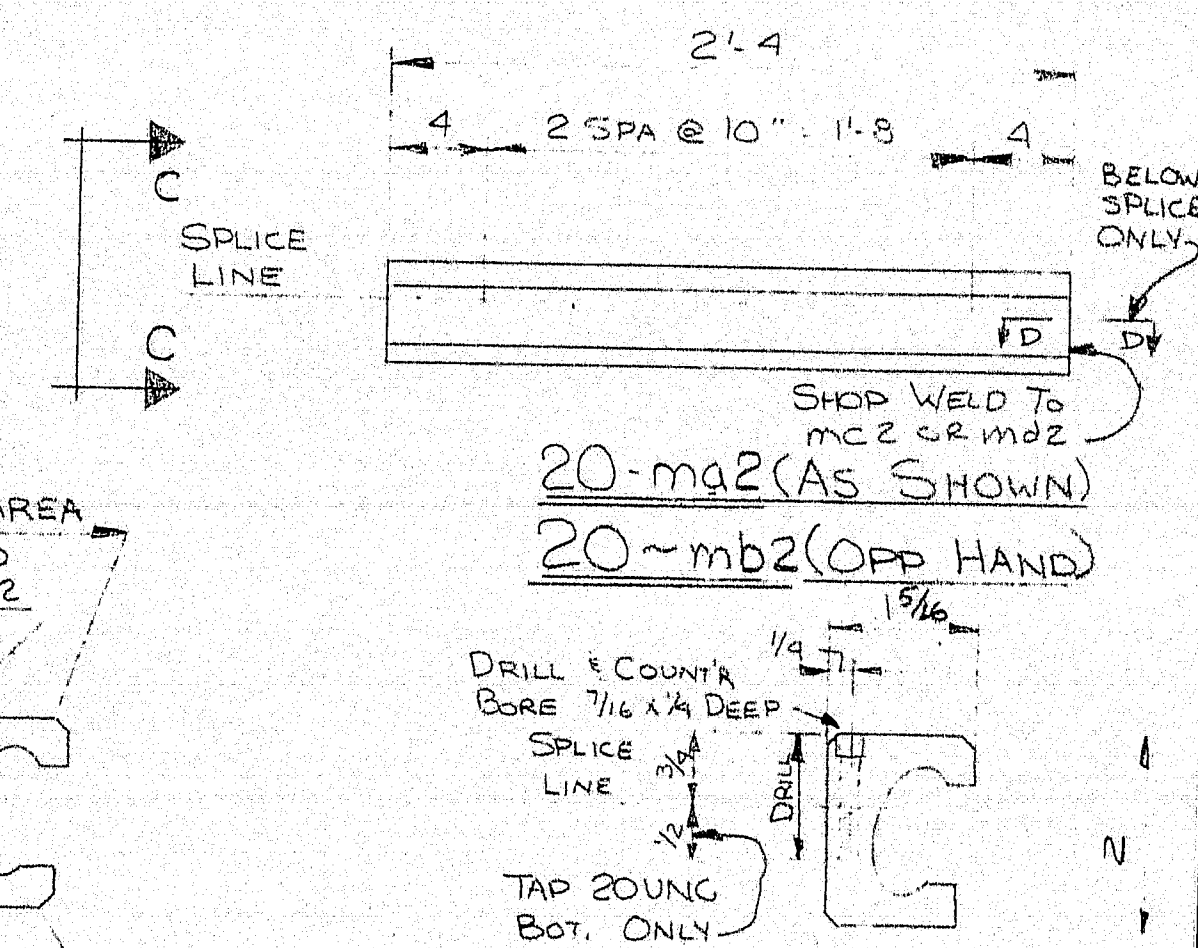
SECTION B-B

99-145

MATERIAL SCHEDULE

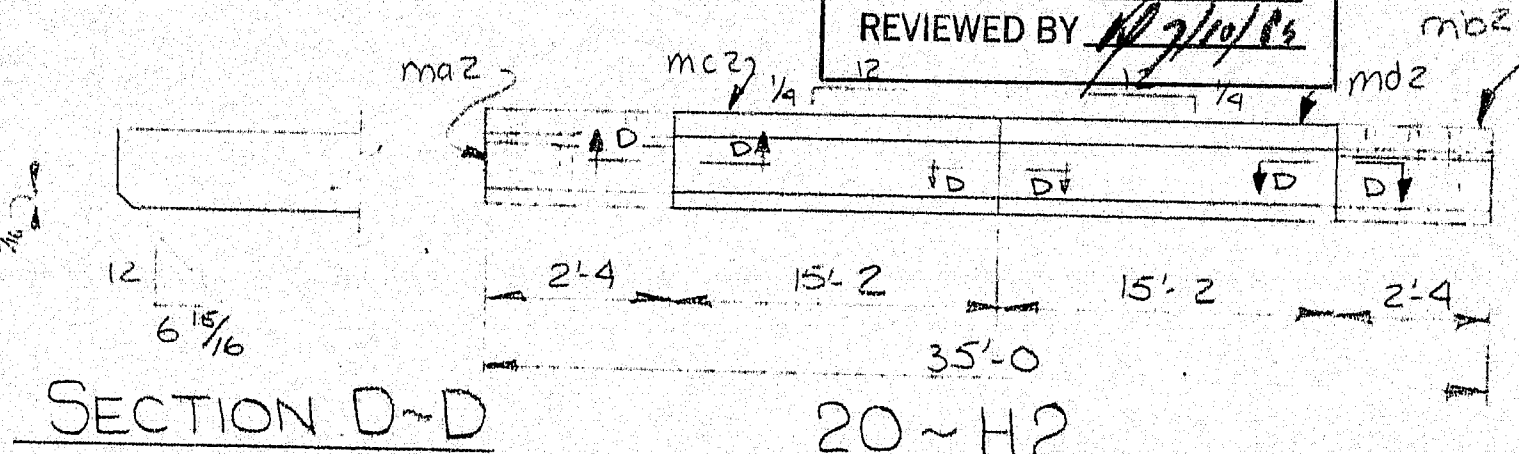
SHIPPING MARK	NO. POS.	SUB-ASSEM.	SHAPE	LENGTH FT. IN.	O OR S	CUT FROM NO. FT. IN.	REMARKS	WT.
A2	20		AS SHOWN					
B2	20		OPP HAND					
	40	pa	R 1/2 X 13/2	1 7/8				
	160	bal	BAR 1 X 1/4	0 10			BEND 8 2	
C2	10		BAR 3/4	31 4				
D2	50		R 3/4 X 4	0 7			NO FAB	
E2	316		BAR 1 X 1/4	0 10			BEND 8 2	
G2	10		GLAND SEALS	35 4			ACME AS900	
H2	20		ASSEMBLIES					
	20	mc2	EXTRUSION	15 2			ACME TYPE 'A' BIE	
	20	mb2	EXTRUSION	15 2			BIE	
	20	ma2	EXTRUSION	2 9			ACME TYPE 'A' (SPIT)	
	20	mb2	EXTRUSION	2 9				
	123	SHOB	1/4" SOCKET HEAD CAP SCREWS	0 1 1/4				

JOINT OPENING @ 45° = 1 3/4



FIELD WELD PREP

OFFICE COPY  
RECEIVED JUL - 3 1984  
CHECKED BY  
REVIEWED BY



PRINT DISTRIBUTION

FA 5-18-84	MATERIAL A36	HOLES
FA 5-19-84	BOLTS	ELECTRODE WELD PROCEDURES
FA 6-19-84	SURFACE PREP SSPC-SP6	REF. DWG. MDOT DRWG 7
FA 6-19-84	PRIMER	
FA 6-28-84	FINISH	
FA 6-28-84		

FOR APPROVAL ONLY

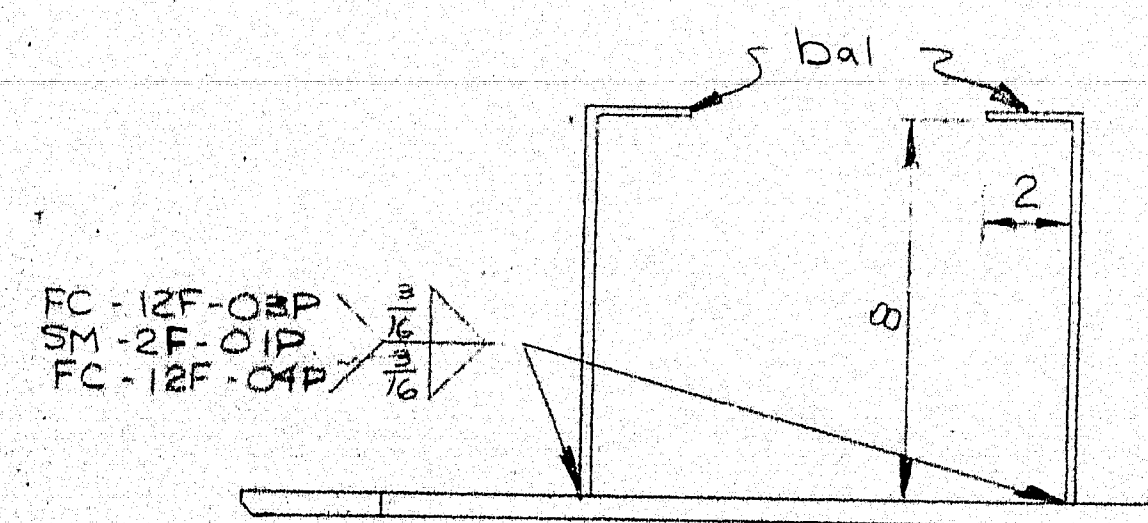
MAINE-CASCADE IRON WORKS  
BAKER STREET, CLINTON, MAINE 04927  
PHONE 207-426-2671

DESCRIPTION REPLACEMENT STEEL FOR PIERS C.D.F.H.K.NOS  
PROJECT MESSALONSKEE STREAM & QUARRY RD BRIDGE  
LOCATION WATERVILLE, MAINE IR-95-6(55)123  
DESIGNER M.D.O.T. IR-95-6(56)123  
CUSTOMER STETSON & WATSON  
JOB NO. 84-545-6 DWG. NO. 2 REV.



JOINT OPENING @ 45° F =

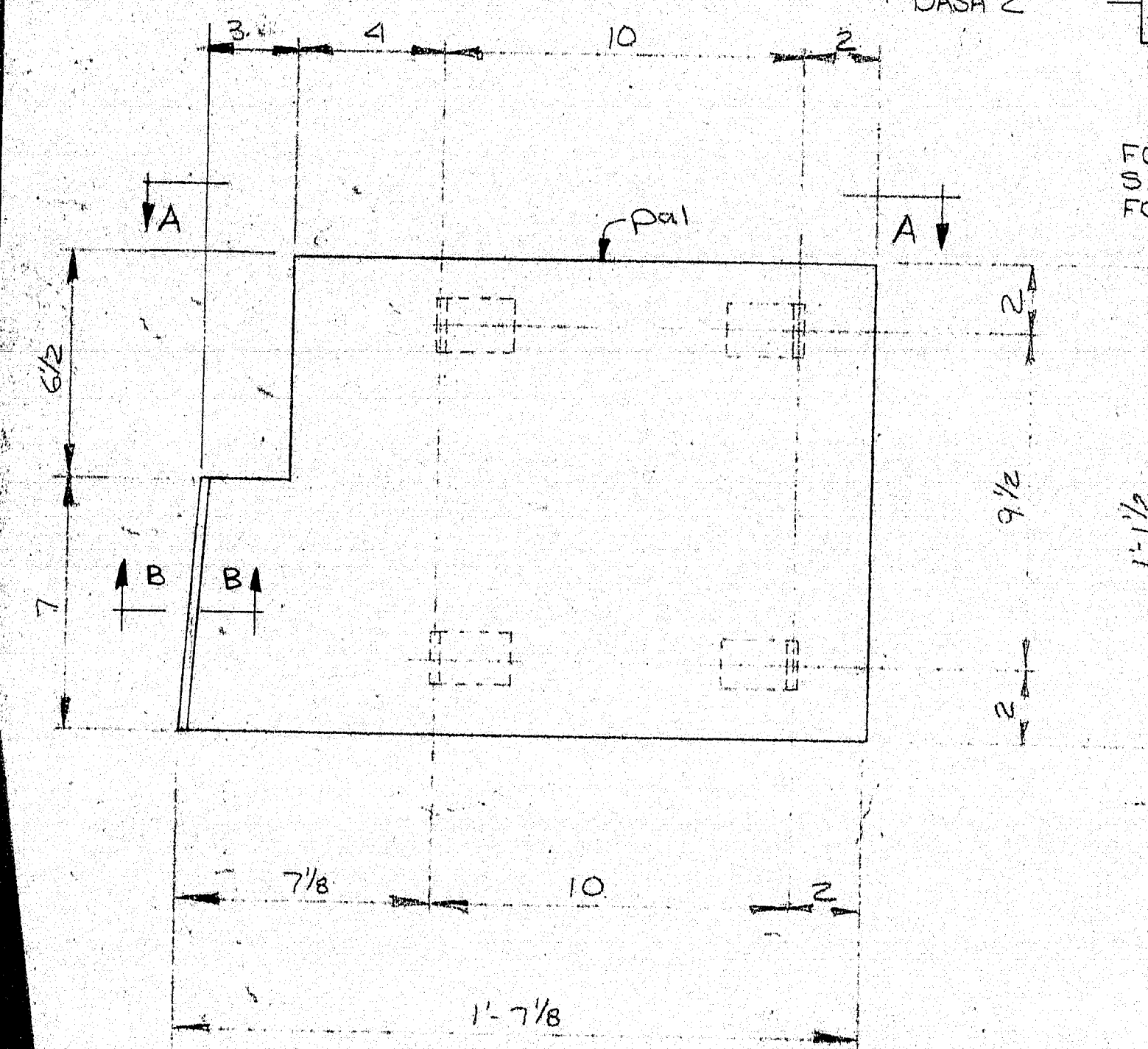
FOR P3 = 1 1/8" @ 1" TO JOINT  
FOR Q3 = 2 1/4" @ 1" TO JOINT  
FOR S3 = 1 1/8" @ 1" TO JOINT



SECTION A-A

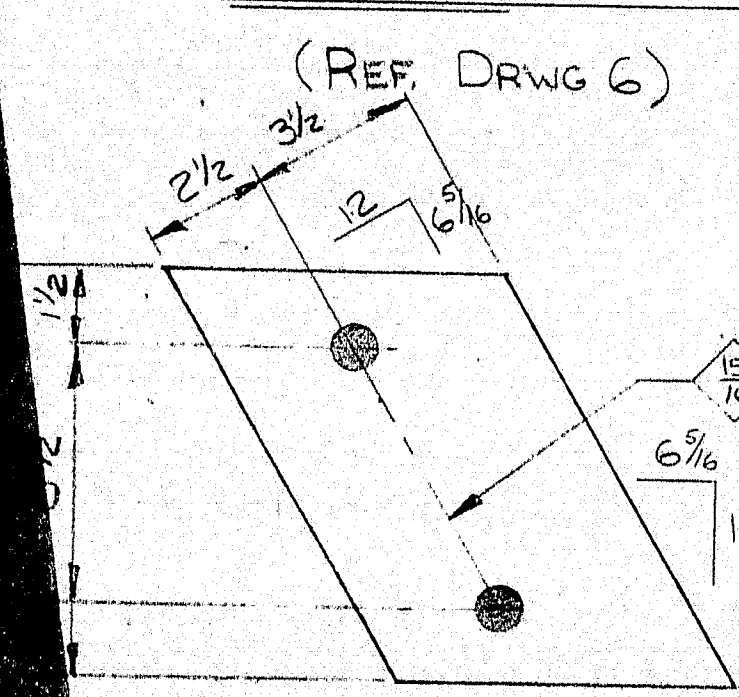
PIERS, B & E @ M.C.R.R.  
PIERS A, C, D, F @ M.C.R.R.  
PIERS E, G, J, P, R, S, T

45° FOR DASH 2  
DASH 2



12~A3 (AS SHOWN)  
12~B3 (OPP HAND)

(REF. DRWG 6)



SECTION B-B

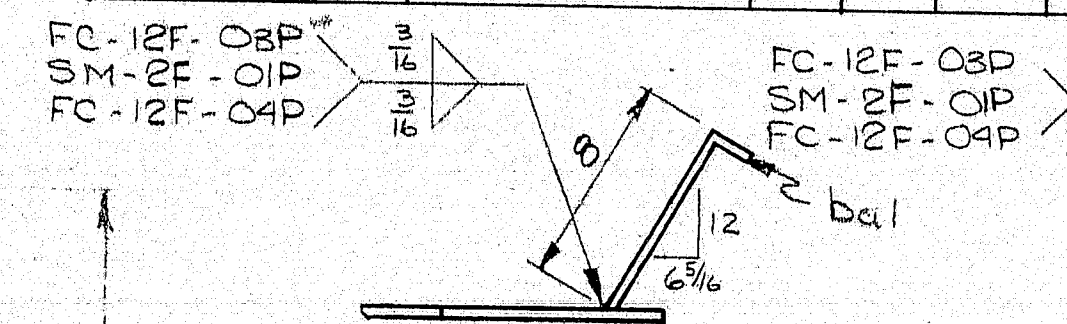
STATE OF MAINE  
DEPARTMENT OF TRANSPORTATION  
JUL 11 1984  
K. Jacobs  
WELDING ENGR.

30~H3  
(REF. DRWG 4)

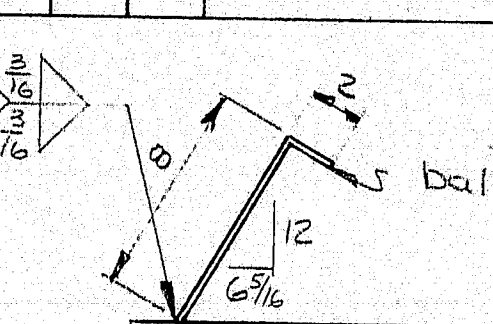
99-146

MATERIAL SCHEDULE

SHIPPING MARK	NO PCS	SUB-ASSEM.	SHAPE	LENGTH FT IN	O OR S	CUT FROM	REMARKS	WT
A3	12		AS SHOWN					
B3	12		OPP HAND					
	24	bal	R 1/2 x 13 1/2	1 7/8	#3	Comp from A1		
	96	bal	BAR 1 x 1/4	0 10		23 20 0 BEND 1/2		
C3	6		BAR 3/4	35 0		18 20 0 NO FAB		
D3	6		BAR 3/4	31 4		19 20 0 NO FAB		
E3	12		R 1/2 x 12 1/8	1 2	#3	Comp from A1		
G3	12		R 1/2 x 12 1/8	1 2				
	48	bal				Comp from B3		
H3	80		R 3/4 x 6	1 0 3/4		2 20 0 NEST		
J3	30		R 3/4 x 4	0 7		17 20 0 NO FAB		
K3	342		BAR 1 x 3/8	1 0		17 20 0 NO FAB		
M3	397		BAR 1 x 1/4	0 10		17 20 0 BEND 1/2		
P3	2		COMP SEALS	37 0 1/4			ACME J-162	
Q3	4		DO	37 0 1/4			ACME J-900	
S3	6		DO	35 4			ACME J-200	
FIELD MATERIALS								
FIELD	519		7/8" A325 HEX I	0 4 1/2		FIELD VERIFY LENGTH W/INUTS & WASH		
	767		7/8" A325 HEX I	0 4 1/4				
	196		7/8" A325 HEX I	0 3 1/2				



SECTION B-B D-D



SECTION C-C

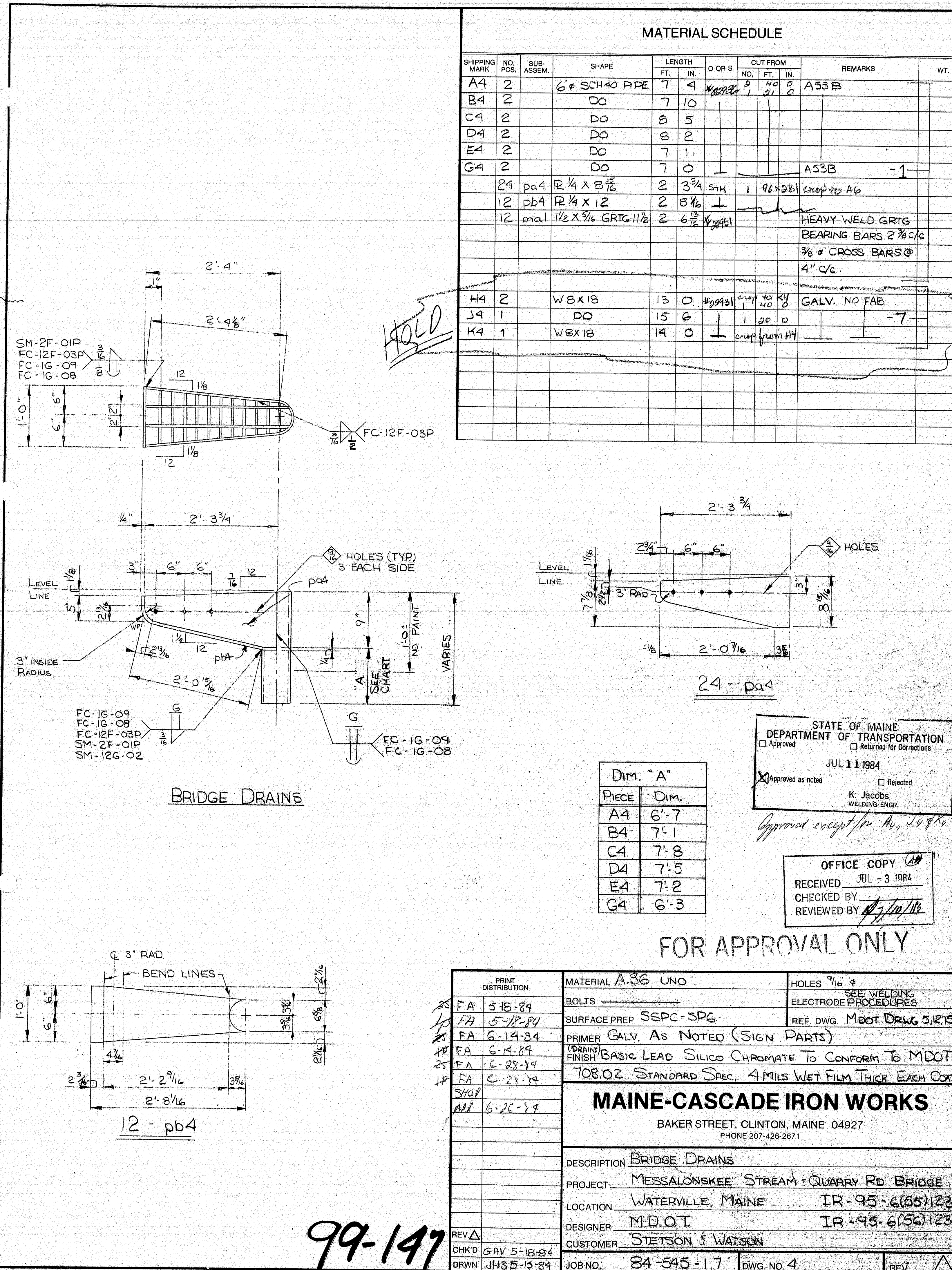
12~E3  
(REF. DRWG 4  
PLAN VIEW)

OFFICE COPY  
RECEIVED JUL 3 1984  
CHECKED BY  
REVIEWED BY

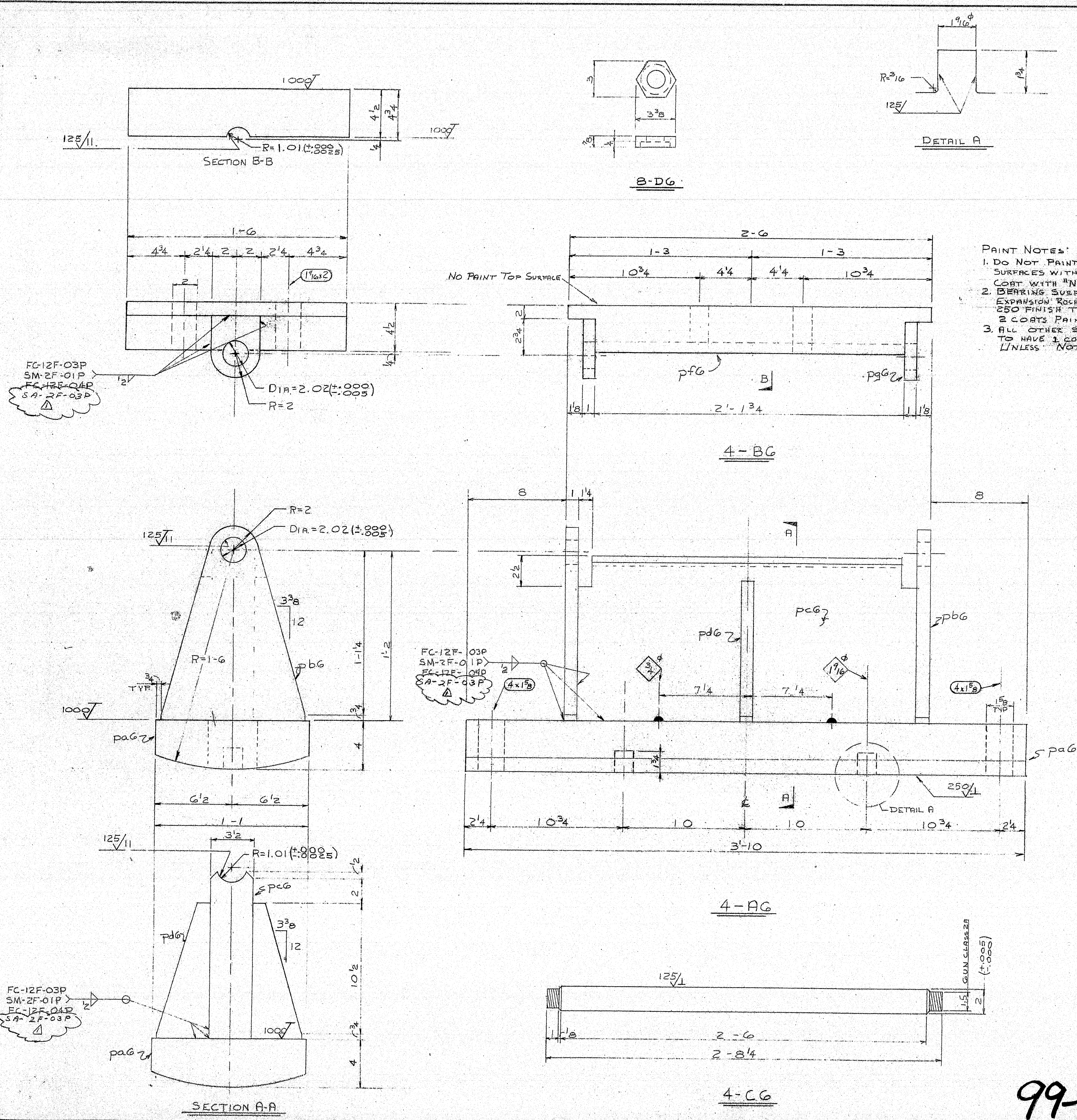
12~G3  
(REF. DRWG 4  
PLAN VIEW)

PRINT DISTRIBUTION		MATERIAL A36		HOLES	
FA	5-18-79	BOLTS A325 TYPE I		ELECTRODE WELD PROCEDURES	
FA	6-12-81	SURFACE PREP SSPC-SP6		REF. DRG. MDOT DRWG 6.4	
FA	6-14-84	PRIMER			
FA	6-14-84	FINISH		FOR YOUR USE	
SHOP	6-24-84	<b>MAINE-CASCADE IRON WORKS</b> BAKER STREET, CLINTON, MAINE 04927 PHONE 207-428-2871 DESCRIPTION REPLACEMENT STEEL FOR PIERS E, G, J, P, R, S, T PROJECT MESSALONSKEE BRIDGE & M.C.R.R. BRIDGE LOCATION WATERVILLE, MAINE IR-95-6(59)123 DESIGNER M.D.O.T IR-95-6(59)123 CUSTOMER STETSON & WATSON JOB NO. 84-545.52 DWG. NO. 3			
APP	6-24-84				
JFYU	6-28-84				
JFYU	6-28-84				
REV	Δ				
CHKD	GRV 5-18-84				
DRWN	JHS 5-14-84				









**PAINT NOTES:**  
 1. DO NOT PAINT OR BLAST SURFACES WITH 125 FINISH. COAT WITH "NEVER-SEZ".  
 2. BEARING SURFACES OF EXPANSION ROCKERS WITH 250 FINISH TO HAVE 2 COATS PAINT.  
 3. ALL OTHER SURFACES TO HAVE 1 COAT PAINT UNLESS NOTED OTHERWISE.

**MATERIAL SCHEDULE**

SHIPPING MARK	NO. POS.	SUB-ASSEMB.	SHAPE	LENGTH FT. IN.	O OR S	OUT FROM NO. FT. IN.	REMARKS	WT
AG	4		BEARING PEDESTAL				(1233)	
4 BG	4	paG	R 4 1/2 x 13	3	10	10 1/2	4 1/2 x 13 MACH	2883
8 pdG	8	pdG	R 1 x 1 1/2	1	4	5 1/4	1 x 1 1/2 MACH	417
4 pcG	4	pcG	R 3/2 x 1 3/4	2	4	5 1/4	3/2 x 1 3/4 MACH	1509
8 pdG	8	pdG	R 1 x 4	0	11 1/4	5 1/4	1 x 4 MACH	162
4 BG	4						(720)	
4 pdG	4	pdG	R 2 x 18	2	6	10 1/2	2 x 18 MACH	2757
8 pdG	8	pdG	R 1 x 4	0	4 3/4	5 1/4	1 x 4 MACH	43
4 CG	4		PIN					
4	4	bar	2 1/4 x 18	2	8 1/4	10 1/2	2 1/4 x 18 MACH TO 2 1/4	145
8 DG	8		20 RECESSED PINNIPES					
FIELD 10	10		1 1/2 H.S.B.				ASSEMBLY 1 W/ H/4 H/4 NUT OF 2 1/4	
							FIELD TO VERIFY LENGTH	

**SHIP ASSEMBLED**  
**WORK WITH DWG 7**

**WELDS TO BE MAGNETIC PARTICLE TESTED**

STATE OF MAINE  
 DEPARTMENT OF TRANSPORTATION  
 Approved ☐ Returned for Corrections ☐  
 AUG - 1 1984  
☐ Approved as noted ☐ Rejected  
 K. Jacobs  
 WELDING ENGINEER

PRINT DISTRIBUTION

28 FH 5-24-84  
 10 LH 5-24-84  
 10 RA 6-15-84  
 10 VMD 6-18-84  
 10 APP 6-22-84  
 10 SHH 6-29-84  
 10 SHH 7-3-84  
 10 FGA

MATERIAL A36  
 BOLTS A325 TYPE 1  
 SURFACE PREP SSPC-SP6  
 PRIMER BASIC LEAD SILICO CHROMATE TO CONFORM  
 FINISH TO MDOT 708.02 STANDARD SPEC  
 4 MILS WET FILM THICKNESS EPOXY COAT

HOLES NOTED  
 ELECTRODE WELD PROCEDURES  
 REF DWG MDOT DWG 3.13

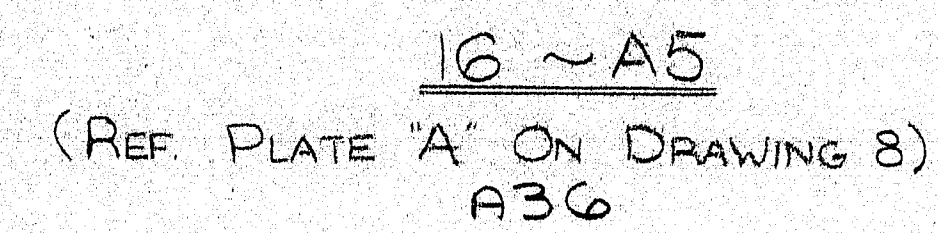
**MAINE-CASCADE IRON WORKS**  
 BAKER STREET, CLINTON, MAINE 04927  
 (603) 882-2271

**FOR APPROVAL ONLY**

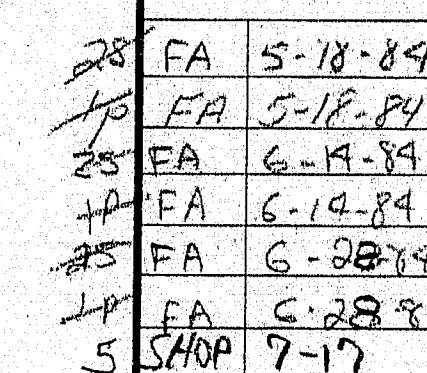
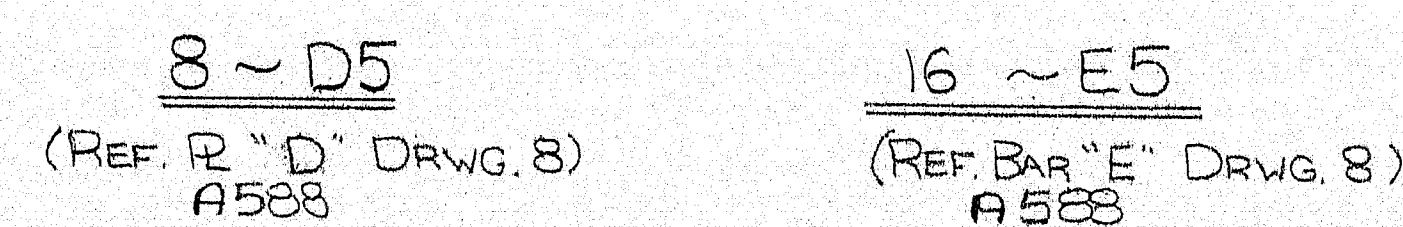
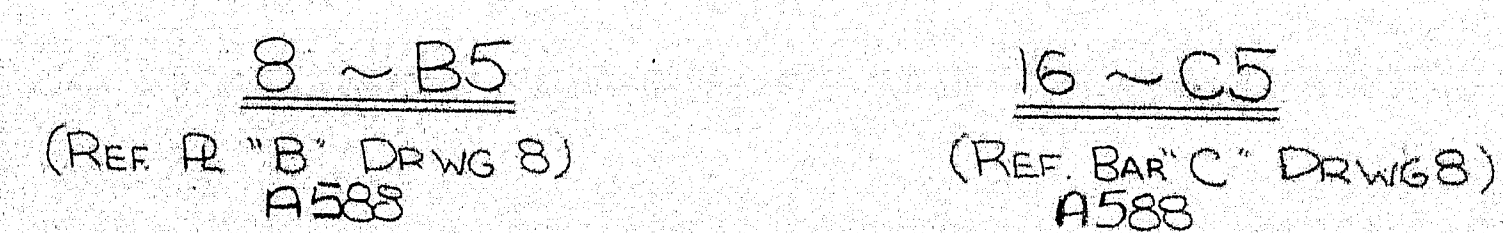
DESCRIPTION EXPANSION PEDESTAL  
 PROJECT MESSALONSKEE STREAM QUARRY RD. BRIDGE  
 LOCATION WATERVILLE, MAINE JR-45-G (5/31/83)  
 TR-15-G (5/31/83)  
 DESIGNER M.D.O.T.  
 CUSTOMER STETSON & WATSON  
 JOB NO. 84-545-3 DWG NO. G REV

99-148





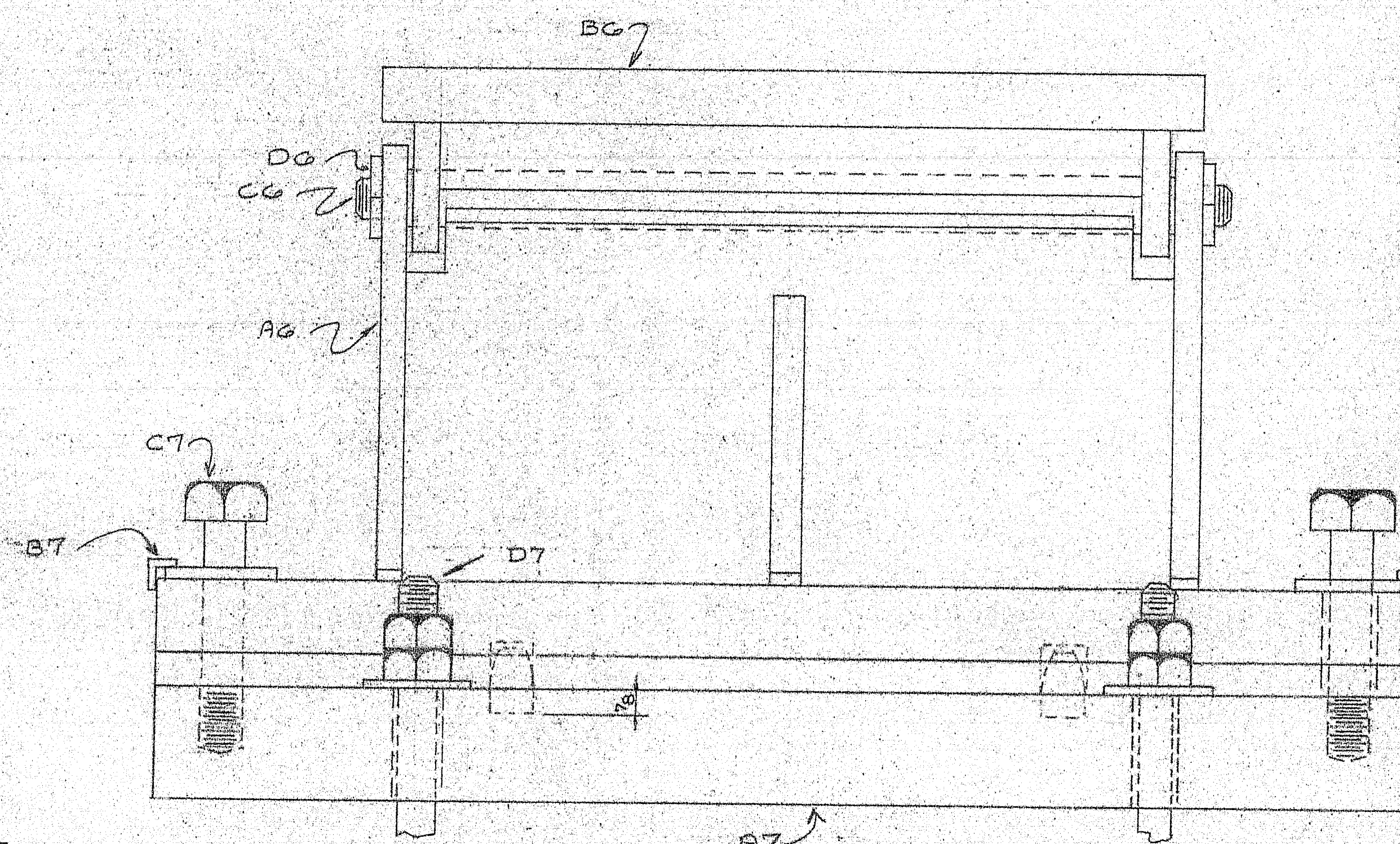
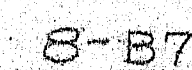
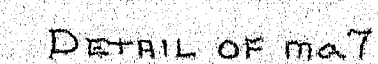
NOTE :  
ALL DIMENSIONS SHOWN  
TAKEN FROM CONTRACT  
DRAWINGS. TEMPLATES WILL  
BE MADE IN THE FIELD TO  
VERIFY DIMENSIONS



MATERIAL SCHEDULE											
SHIPPING MARK	NO. PCS.	SUB. ASSEM.	SHAPE	LENGTH		O OR S	CUT FROM		REMARKS (324)	WT.	
				FT.	IN.		NO.	FT.			IN.
A5	16		R 1/16 X 48 1/2	2	6 3/8	5-27-110 B	76X140		CHARRY V-NOTCH	A36	
* NOTE - DIRECTION OF GRAIN RUNNING 2' 6 3/8 WAY WAY TEST REQ'D											
B5	8		R 5/8 X 18	3	11 1/2	23-779	1 96 X 250	(55)	A588	12-21	
C5	16		R 7/8 X 6	3	11 1/2		1 96X120	(71)	A588	11-40	
D5	8		R 5/8 X 18	4	5 3/8		as above	(172)	A588	13-77	
E5	16		R 7/8 X 6	4	5 3/8		as above	(50)	A588	12-50	
TO MEET PAR. 713.01 OF STD. SPEC. 15 FT. LB. @ 40° F.											
27-27 15 ELI 110 2 450° F 13.0											
NOTE: STATE INSPECTOR TO WITNESS CUTTING OF A5 PLATES.											
STATE OF MAINE DEPARTMENT OF TRANSPORTATION <input checked="" type="checkbox"/> Approved <input type="checkbox"/> Returned for Corrections JUL 20-1984 <input type="checkbox"/> Approved as noted <input type="checkbox"/> Rejected K. Jacobs WELDING ENGR.											
TOTAL WEIGHT										8773	
PRINT DISTRIBUTION 28 FA 5-18-84 13 FA 5-18-84 25 FA 6-15-84 10 FA 6-14-84 25 FA 6-28-84 5 FA 6-28-84 SHOP 7-17				MATERIAL NOTED BOLTS 7/8" A325 TYPE 1 SURFACE PREP SSPC-SP6 PRIMER _____ FINISH _____				HOLES 15/16" 6 ELECTRODE _____ BEF DWG MDOOT DWG 8 OFFICE COPY (A) RECEIVED JUL 19 1984 CHECKED BY [Signature] REVIEWED BY [Signature]			
MAINE-CASCADE IRON WORKS FOR YOUR USE BAKER STREET, CLINTON, MAINE 04927 PHONE 207-428-2671											
DESCRIPTION <u>SPICE PLATES</u> PROJECT <u>MESSALONSKEE STREAM &amp; QUARRY RD. BRIDGE</u> LOCATION <u>WATERVILLE, MAINE</u> <u>IR-95-6(55)123</u> DESIGNER <u>M.D.O.T.</u> <u>IR-95-6(55)123</u> CUSTOMER <u>STETSON &amp; WATSON.</u>											
REV. Δ CHKD GAV 5-18-84 DRWN JHS 5-15-84 JOB NO. <u>84-545-2</u> DWG. NO. <u>5</u>											

99-149





1. MAGNARY PLATE, A7, TO RECEIVE  
2 COATS OF PAINT.
2. PLATE WASHER: 2 CAP SCREWS, C7  
TO RECEIVE 1 COAT
3. ANCHOR BOTS. NO PAINT
4. WORK WITH PAINT NOTES  
ON DWG 6

99-150

INSPECTION BY MDOT  
CONTACT BRIAN HARRIS  
BUREAU OF CONSTRUCTION  
207-289-2171

 $\frac{2}{10}$